

# SFTP File Transfer Instructions

- [Introduction](#)
- [SFTP with WinSCP](#)
- [SFTP with FileZilla](#)
- [SFTP command line usage](#)
- [Points of Caution](#)

Only use this method if encounter issues using [Transfer file](#) function on Flow homepage, contact [support@partek.com](mailto:support@partek.com) to obtain private key.

## Introduction

The following instructions detail the use of SFTP (Secured File Transfer Protocol) to transfer data to and from your Partek Flow instance. SFTP offers significant performance and security enhancements over FTP for file transfers. It also enables the use of robust file syncing utilities, e.g. RSYNC, and is compatible with common file transfer programs such as FileZilla and WinSCP.

To transfer files with SFTP, you will need to have your Partek Flow:

- Server Name. Example: myname.partek.com
- Username. Example: flowloginname
- Private authentication key

This information should have been e-mailed to you from the Partek licensing team. If you lose this information, contact Partek support and we will resend your authentication key to you.

## SFTP with WinSCP

WinSCP is an open source, free SFTP client for Windows. Its main function is file transfer between a local and a remote computer.

### Downloading WinSCP

To download WinSCP, visit WinSCP's official site: <https://winscp.net/eng/download.php> On the WinSCP page you may need to scroll a bit down, to reach the green button Download WinSCP.

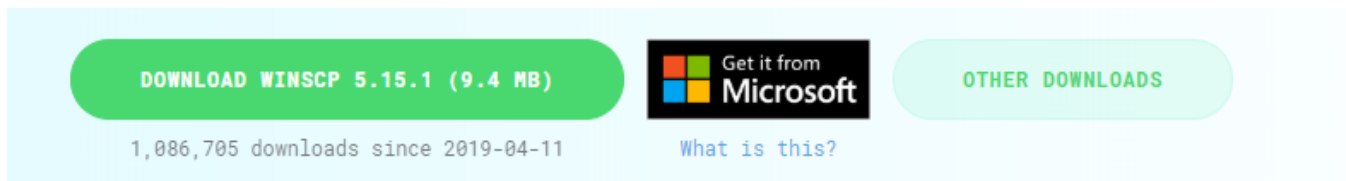


Figure 20. Download button on WinSCP's official web site. Note: the version may change from the time of writing of this document

## Connecting to your Partek server with WinSCP

Download and install WinSCP on your local computer and then launch the program.

- On the Login page click on the **New Site** icon.

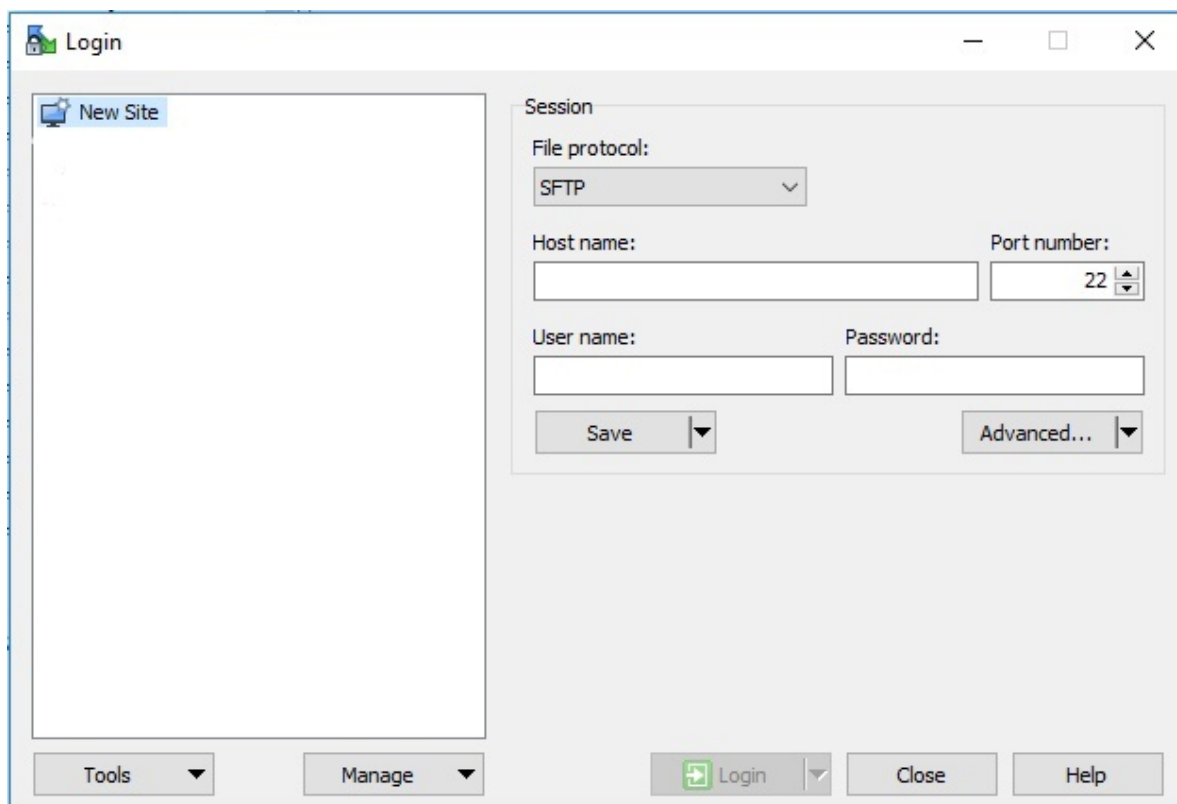


Figure 21. Adding NewSite on WinSCP's Login page

- Type in the **Host Name**, which is the same as the web address that you use to access your instance of Partek Flow

The web address for your instance of Partek Flow has been sent to you by Partek's Licensing team. In this example, the web address is *ilukic5i.partek.com*.

- Type in the **User name**, that has also been sent to you (and is the same user name that you use to log on to Partek Flow). In this example, the web address is *lukici*.

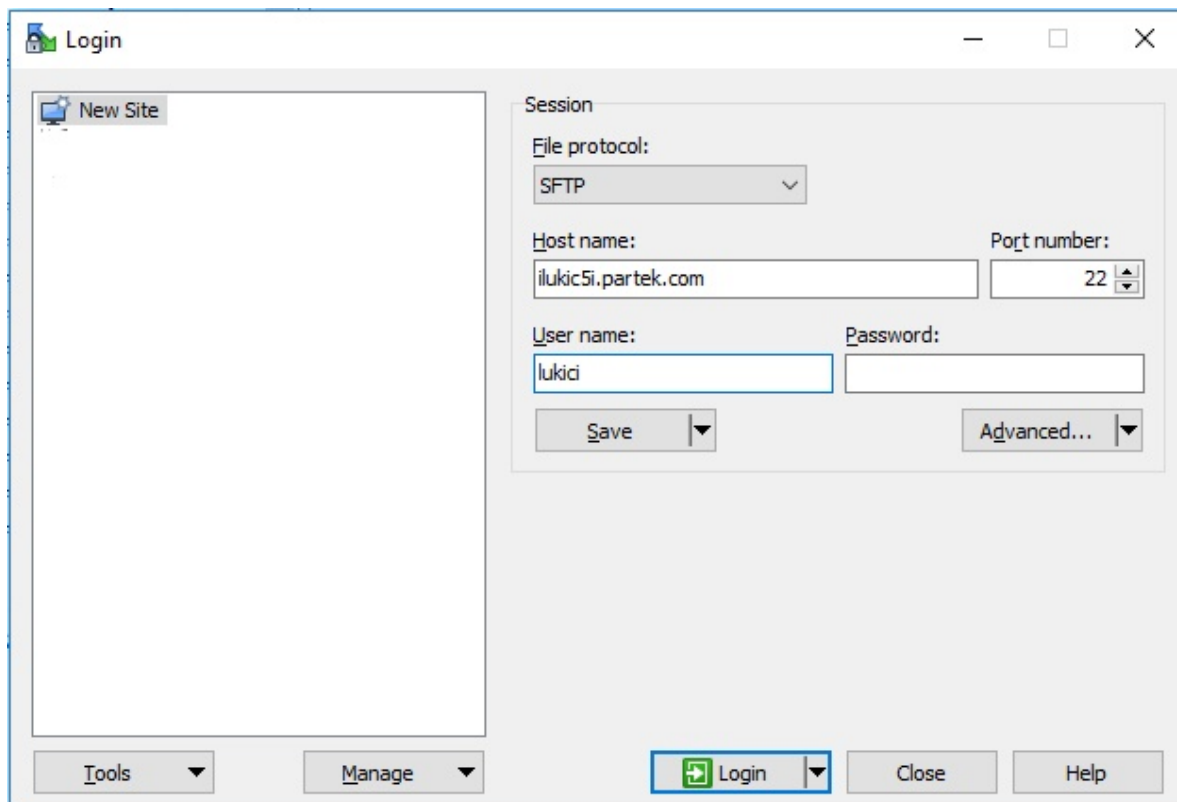


Figure 22. Adding Host name and User name information. Use the host and user name that has been sent to you by Partek's licensing team

- To proceed click on the **Advanced...** button
- Then select the **Authentication** in the **SSH** section of the *Advanced Site Settings* dialog

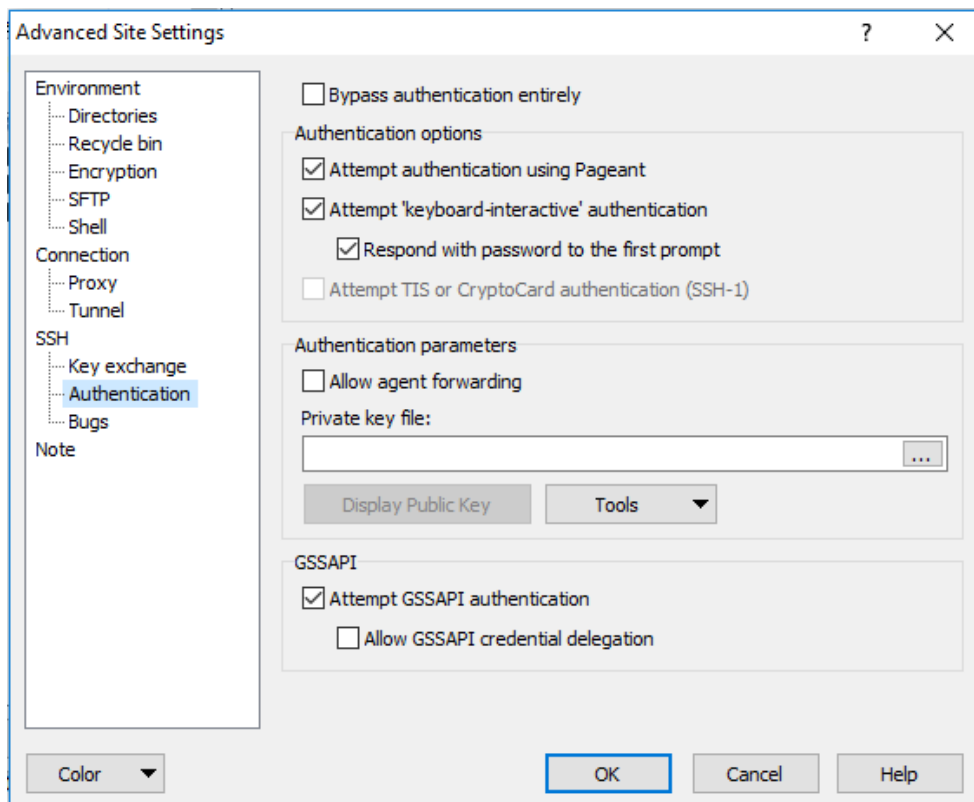


Figure 23. Adding the `id_rsa` file to WinSCP. Use the *Advanced Site Settings* tab and select *Authentication*

- Select the `...` button (under *Private key file*) to browse for the `id_rsa` file.

The file has been sent to you by Partek's licensing team attached to the same email that gave you your URL and username.

- If you do not see it in the *Select private keyfile* browser, switch to **All Files (\*.\*)**

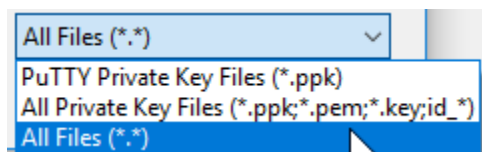


Figure 24. Showing all files in the *Select private key file* dialog

- Click **Open**

WinSCP will ask you to confirm file format conversion

- Click **OK**.

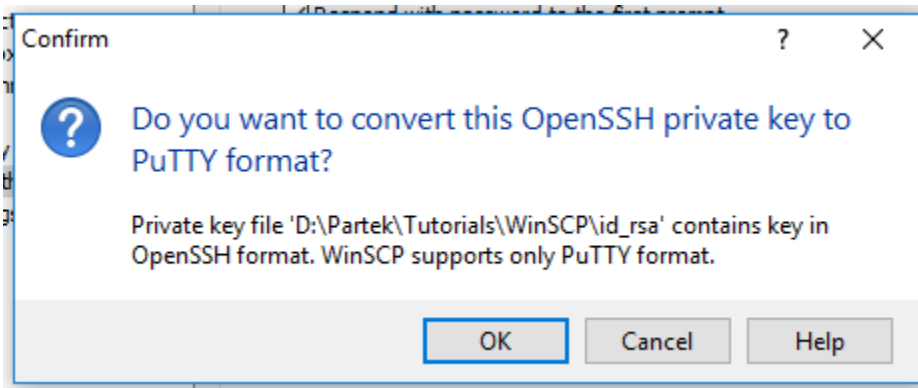


Figure 25. Converting key file format

WinSCP will create a file in .ppk format.

- Click **Save** to save the converted key file, *id\_rsa.ppk*, to a secure location on your local computer.
- Click **OK** again to confirm the change.

Your private key has been saved in .ppk format and added to WinSCP

- Click **OK** to proceed

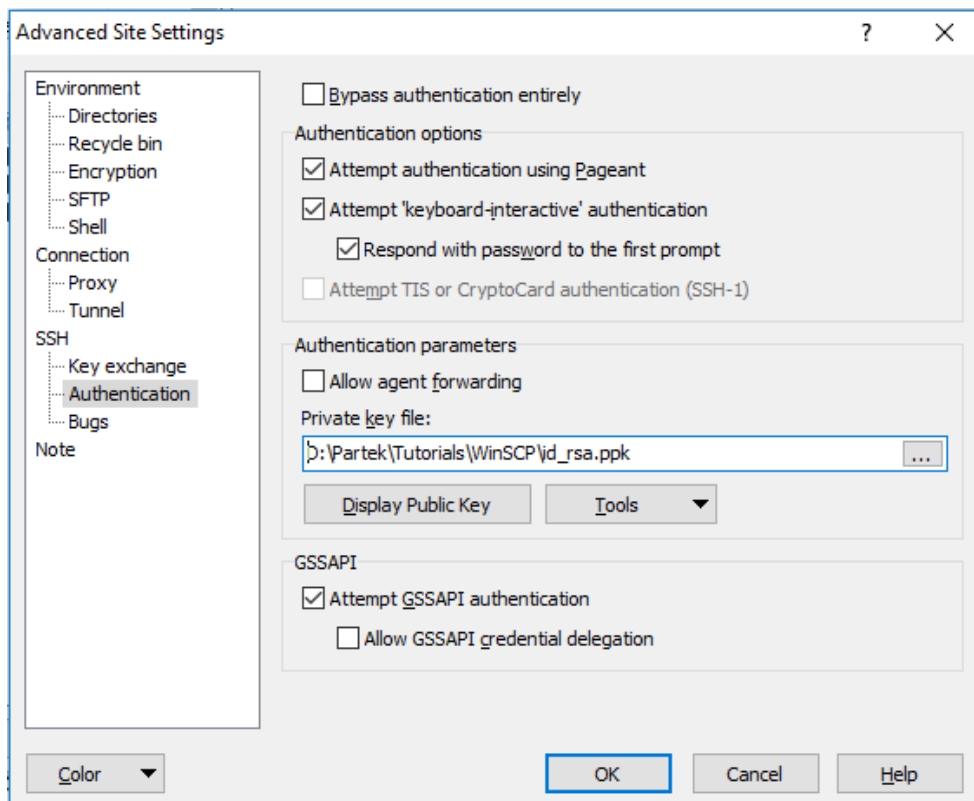


Figure 26. Private key in .ppk format added to WinSCP

- Click **Save** to save the new WinSCP settings.

This will open the *Save session as site* dialog. You can accept the default name (in this example *lukici@ilukic5i.partek.com*) or add a custom name. The name that you specify here will appear in the left panel of the *Login* dialog.

- Once you have made your edits, click **OK**.

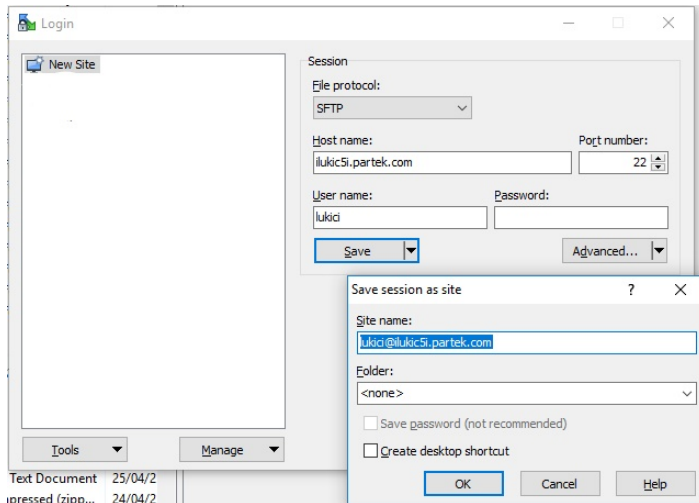


Figure 27. Customising the name for the new site on the Login dialog. In this example, the name is `lukici@ilukic5i.partek.com`

- On the *Login* page, select your newly created site (in this example: `lukici@ilukic5i.partek.com`) and click the **Login** button.

The first time you connect, a warning message will appear, asking you whether you want to connect to an unknown server.

- Click **Yes** to proceed.

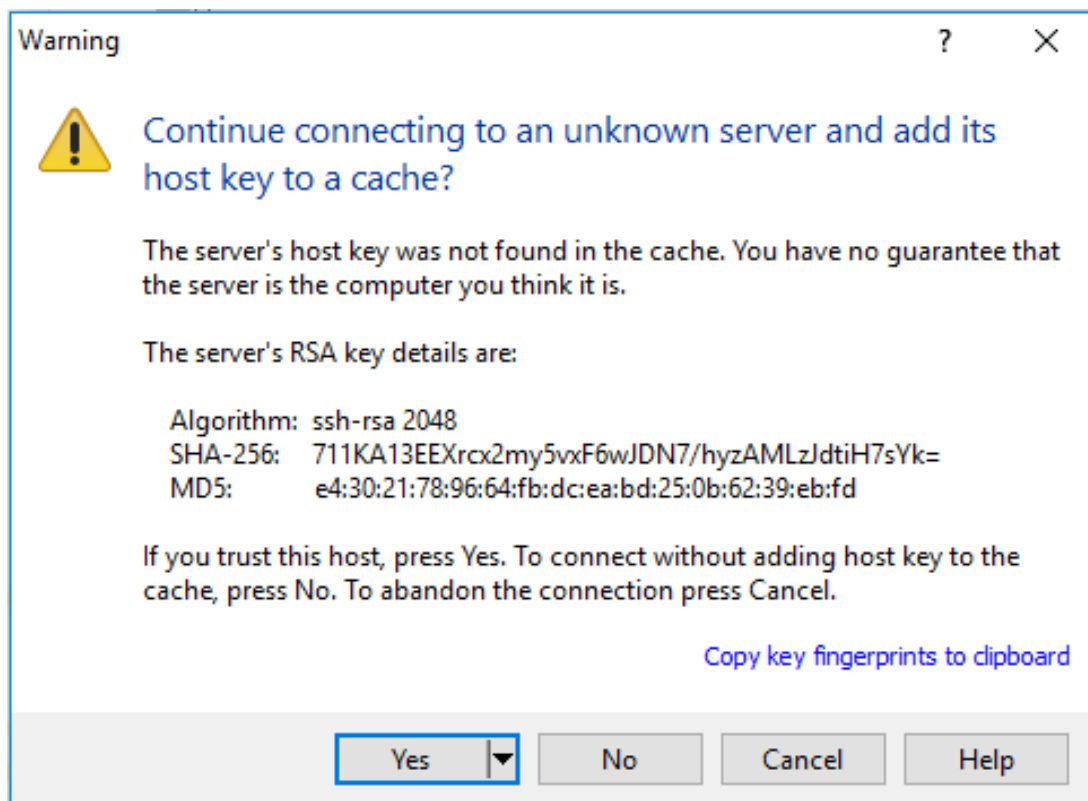


Figure 28. The first time you connect to your Partek server, WinSCP will present a warning message. Click **Yes** to connect to the server

The progress towards establishing a connection will be displayed in a dialog. This process is automatic and you do not need to do anything.

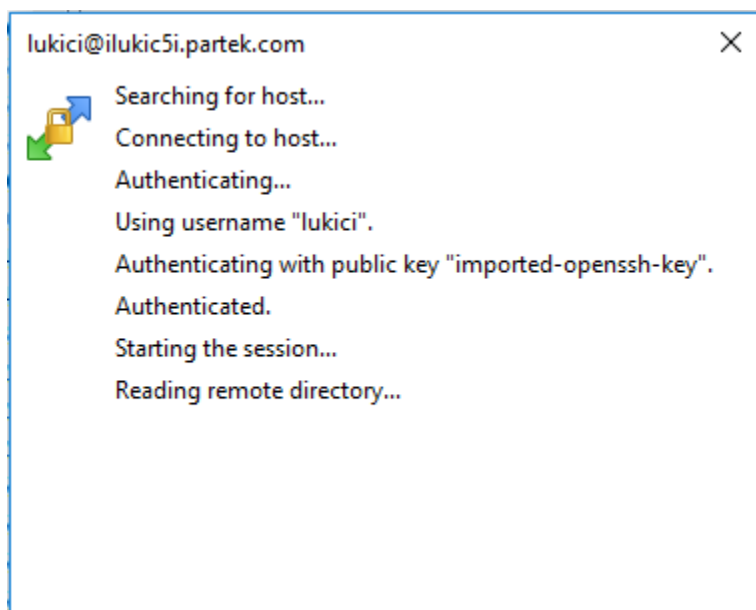


Figure 29. Progress of the connection to your Partek server will be displayed on the screen

The WinSCP interface includes is split into two panels. The panel on the left shows the directory structure of your local computer and the panel on the right shows the directory structure of your Partek Flow file server.

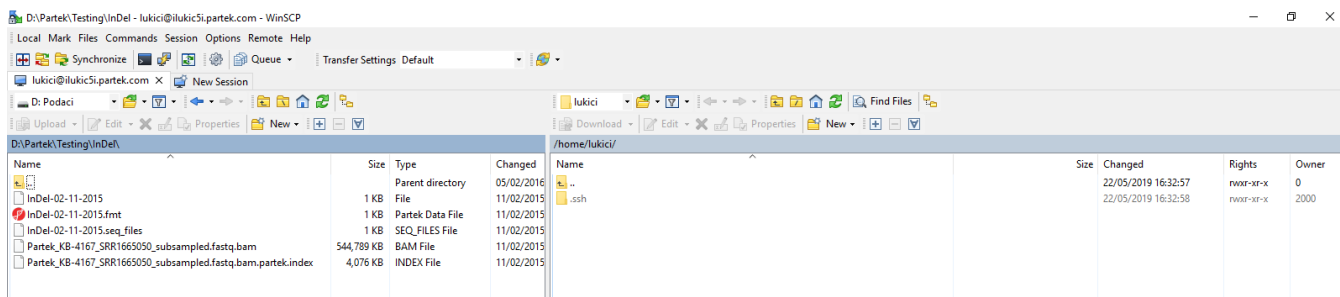


Figure 30. WinSCP screen after connection divides into two panels: the files on the left are on the local computer, while the files on the right are on Partek server

To transfer a file, just **drag and drop** the file from one panel to the other. The progress of your transfer will be shown on the screen.

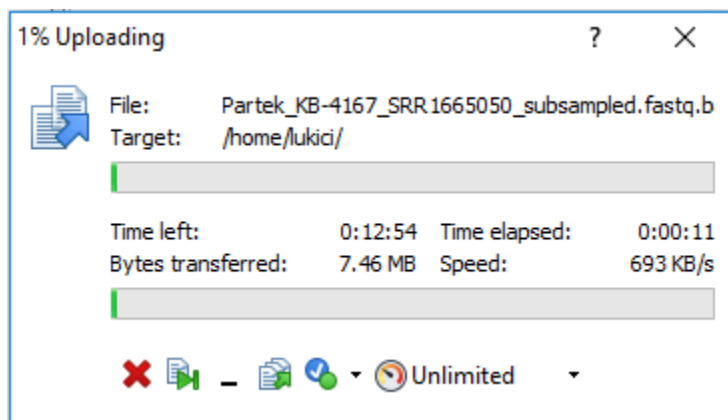


Figure 31. Progress of file transfer is shown on screen

## SFTP with FileZilla

FileZilla is a graphical file transfer tool that runs on Windows, OSX, and Linux. It is great when needing to do bulk transfers as all transfers are added to a queue and processed in the background. It is possible to browse your files on the Partek Flow server while transfers are active. This is also the best solution when you are not on a computer with command line access or you are uncomfortable with command line operations.

### Downloading FileZilla

We recommend downloading the FileZilla install packages from us. They are also available from download aggregator sites (e.g. CNET, [download.com](http://download.com), sourceforge) but these sites have been known to bundle adware and other unwanted software products into the downloads they provide, so avoid them.

Mac OSX:

<http://packages.partek.com/bin/filezilla/fz-osx.app.tar.bz2>

Windows 32-bit:

<http://packages.partek.com/bin/filezilla/fz-win32.exe>

Windows 64-bit:

<http://packages.partek.com/bin/filezilla/fz-win64.exe>

Linux (Please use your distribution's package manager to install Filezilla):

Ubuntu:

```
$ sudo apt-get update
```

```
$ sudo apt-get install filezilla
```

RedHat, see the following guide:

<http://juventusitprofessional.blogspot.com/2013/09/linux-install-filezilla-on-centos-or.html>

OpenSuse, see:

<https://software.opensuse.org/package/filezilla>

### Connecting to your Partek server with FileZilla

After starting FileZilla, click on the Site Manager icon located at the top left corner of the FileZilla window.

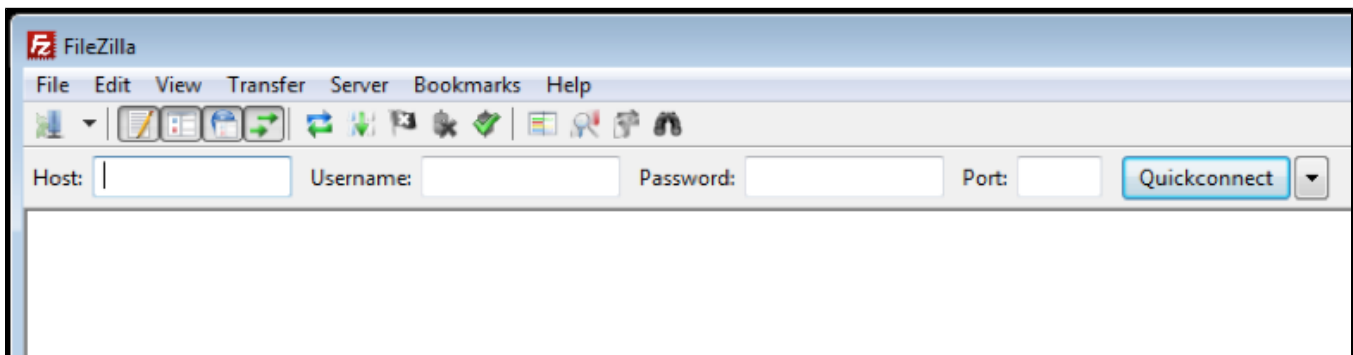


Figure 32.

Click on the New Site button on the left of the popup dialog.



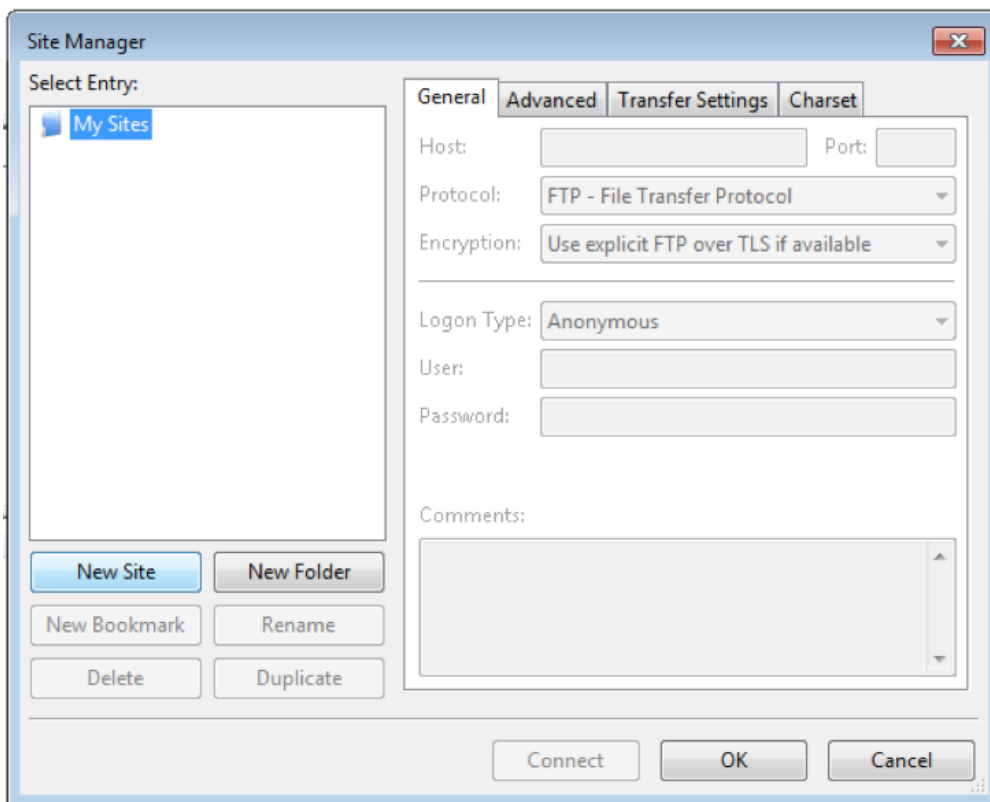


Figure 33.

Type in a name for the connection. Example: "Partek SFTP".

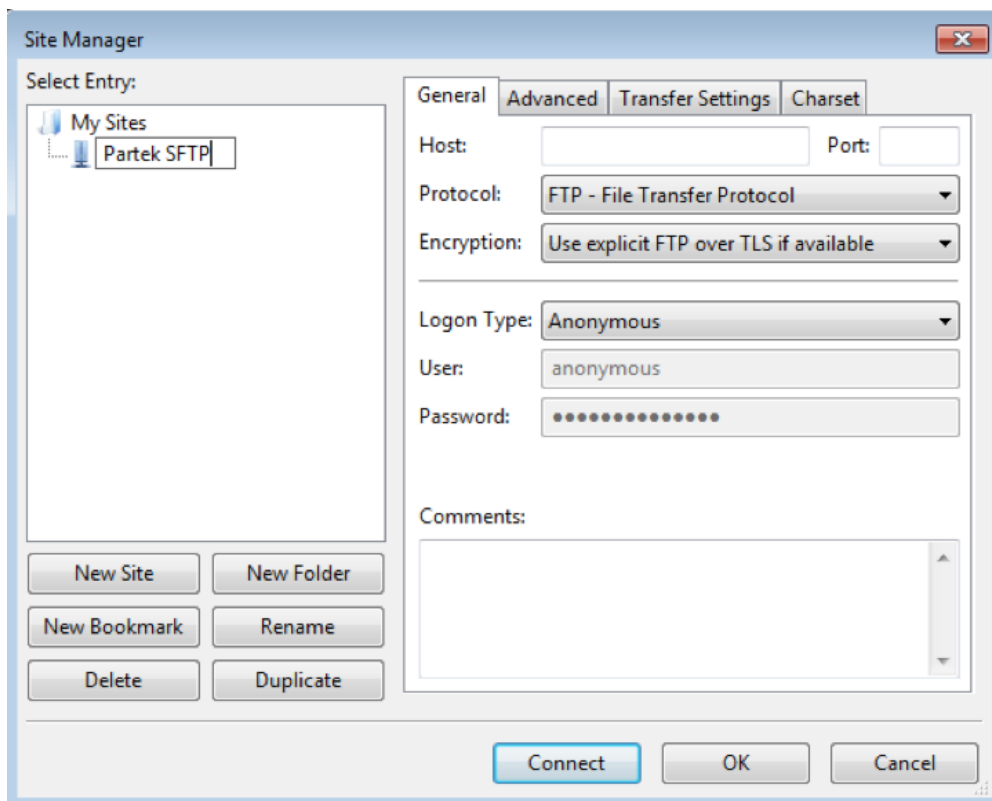


Figure 34.

The connection details to the right need to be changed to reflect the information you received via email. The default settings will NOT work.

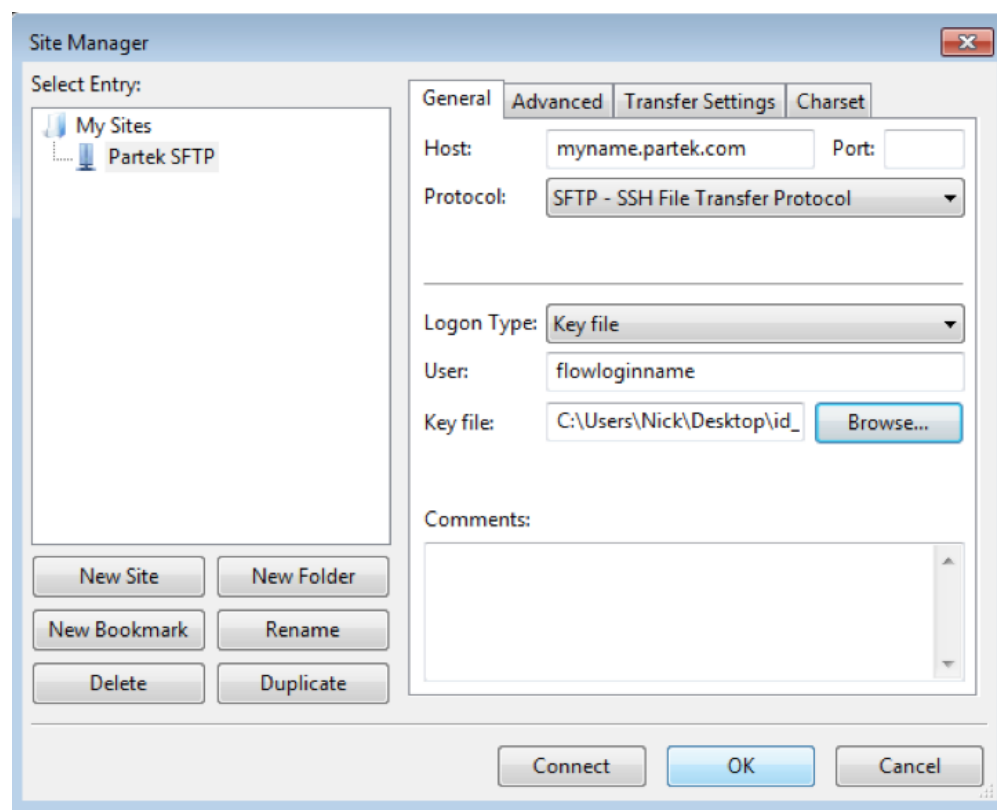


Figure 35.

- Set Host: to your partek server name
- Leave Port: blank
- Change Protocol: to SFTP - SSH File Transfer Protocol
- Change User: to your Partek Flow login name
- Change Logon Type: to Key File and select the key file received via email.

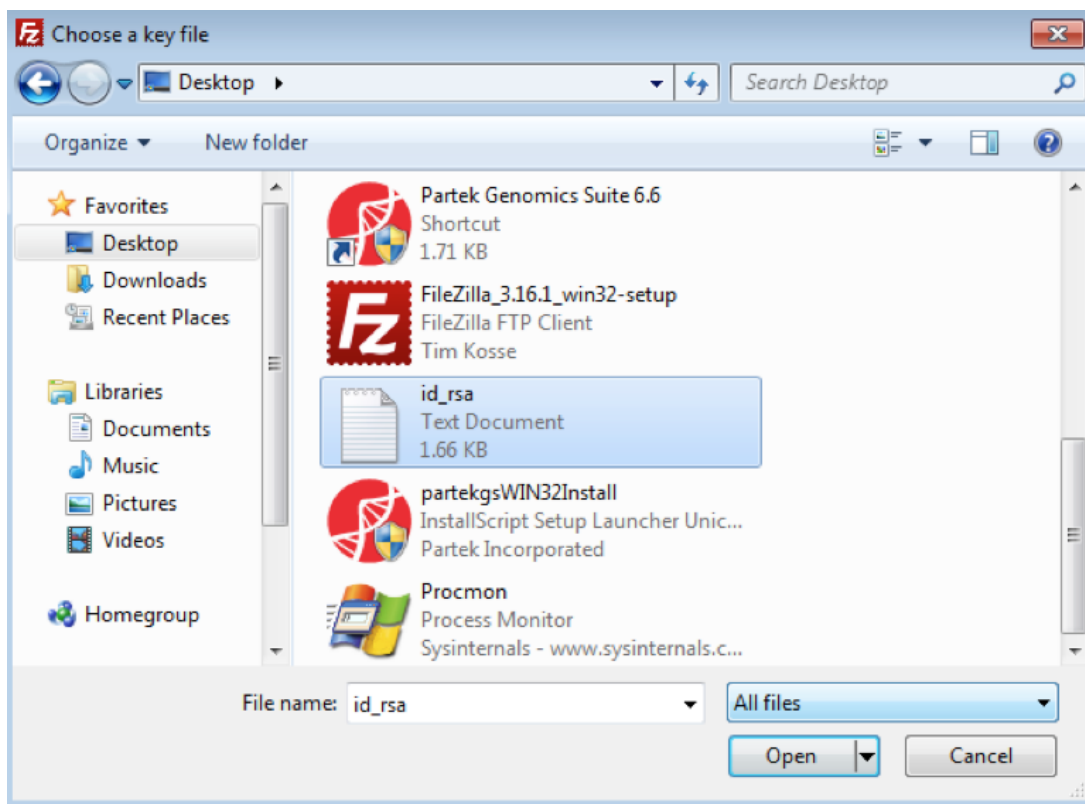


Figure 36.

When selecting your key file, change the file selection from its default of PPK files to All files. Otherwise your key file will not be visible in the file browser.

After selecting your key file, click the Connect button.

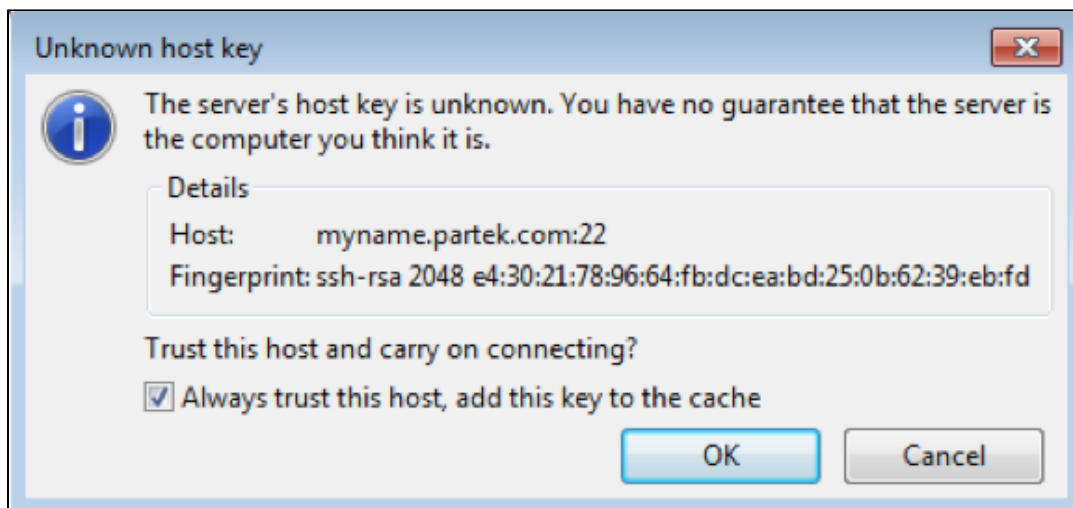


Figure 37.

Click the checkbox to always trust this host and click OK. Once connected, you can begin to browse and transfer files. The files and folders to the left are on your computer, the ones on the right are on the Flow server.

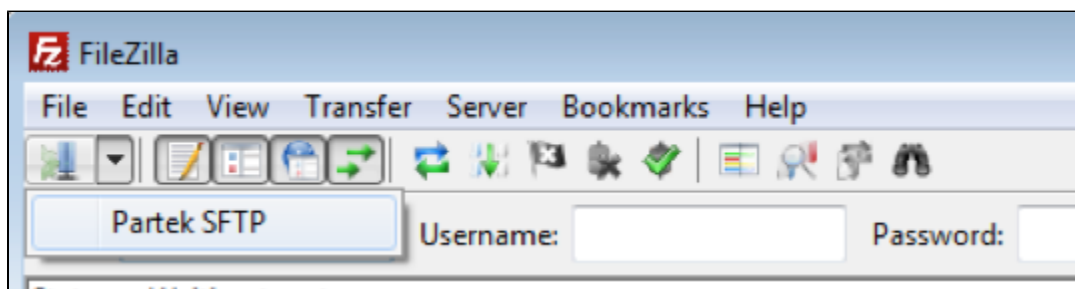


Figure 38.

When you need to reconnect to your server, run FileZilla and click the down arrow next to the Site Manager icon, then select Partek SFTP.

## SFTP command line usage

### Importing your private authentication key

You will receive a file called `id_rsa` via email. Download this file, note where you downloaded it to, then use `ssh-add` to import the key. If you logout or reboot your computer, you will need to re-run the commands below. After key import, you will not be asked a password when transferring files to your Partek Flow server.

```
$ cd directory/with/key
$ chmod 600 id_rsa
$ eval $(ssh-agent)
$ ssh-add id_rsa
```

## Copying files and folders between your Partek Flow server and local computer

### RSYNC usage

RSYNC is useful when resuming a failed transfer. Instead of re-uploading or downloading what has already been transferred, RSYNC will copy only what it needs.

The command below will sync the folder "local\_folder" with the "remote\_folder" on Partek's servers. To transfer in the other direction, reverse the last two parameters.

```
$ rsync -avr --progress ./local_folder/ flowloginname@myname.partek.com:~/remote_folder/
```

With rsync, don't forget the trailing '/' on directory names.

Before moving the files, we strongly advise you to use FileZilla to explore the directory structure of the Partek server and then create a new directory to transfer the files to.

## Points of Caution

- When you delete files from the Partek Flow server they are gone and can not be recovered.
- Please use Partek Flow to delete projects and results. Manually removing data using SFTP could break your server.
- Wait until ALL input data for a particular project has been transferred to the Partek Flow server before importing data via Partek Flow. If you try to import samples while the upload is occurring the import job will crash.
- When upload raw data to Partek hosted Flow server, we recommend to create a subfolder for each experiment at the same level of "FlowData" folder or inside "FlowData" folder.

## Additional Assistance

If you need additional assistance, please visit [our support page](#) to submit a help ticket or find phone numbers for regional support.

[« Importing Data](#)   [Sample Table from a Text File](#) »



Your Rating:  Results:  34 rates