

# Cell Ranger - Gene Expression

- [What is Cell Ranger?](#)
- [Cell Ranger - Gene Expression in Partek Flow](#)
- [Running Cell Ranger - Gene Expression in Flow](#)
- [Cell Ranger - Gene Expression task report in Flow](#)
- [References](#)

## What is Cell Ranger?

Cell Ranger is a set of analysis pipelines that process Chromium single cell data to align reads, generate feature-barcode matrices and perform clustering and gene expression analysis for 10X Genomics Chromium Technology[1].

## Cell Ranger - Gene Expression in Partek Flow

The '*cellranger count*' pipeline from Cell Ranger v6.0.0[2] has been wrapped in Partek Flow as **Cell Ranger - Gene Expression** task. It does not comprehensively cover all of the options and analysis cases Cell Ranger can handle for now, but converts FASTQ files from '*cellranger mkfastq*' and performs alignment, filtering, barcode counting, UMI counting for single cell gene expression and Feature Barcode data. The output gene expression count matrix in *.h5* format (both raw and filtered available for users to download in the output page of task details) then becomes the starting point for downstream analysis for scRNA-seq in Flow. For Feature Barcode data, Flow outputs a unified feature-barcode matrix that contains gene expression counts alongside Feature Barcode counts for each cell barcode.

**Note:** When use **Cell Ranger - Gene Expression** task in Partek Flow, there are more restrictions on sample name -- sample name can only contain letters, digits, underscores and dashes. Please edit the sample names on Data tab in Partek Flow to remove any other characters ,e.g. space etc.

## Running Cell Ranger - Gene Expression in Flow

To run the **Cell Ranger - Gene Expression** task for scRNA-seq data in Flow, select **Unaligned reads** datanode, then select **Cell Ranger - Gene Expression** in the **10x Genomics** section (left panel, Figure 1). For Feature Barcode data, there will be two data nodes once the FASTQ files have been imported into Flow properly - mRNA and protein (right panel, Figure 1). Users should select mRNA datanode to trigger the **Cell ranger - Gene Expression** task.

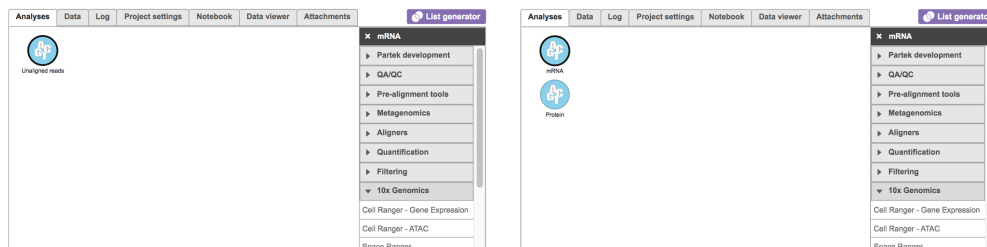


Figure 11. Selecting the Cell Ranger - Gene Expression task for converting fastqs to Single cell counts.

Once the Genomics production has been picked, users will be asked to create a Reference assembly if it is the first time to run the **Cell Ranger - Gene Expression** task (Figure 2). In Partek Flow, we will use Cell Ranger ARC 2.0.0 to create reference assembly for all 10x Genomics analysis pipelines. To create and use a reference assembly, Cell Ranger ARC requires a reference genome sequence (FASTA file) and gene annotations (GTF file), here are the [details](#).

### Genomics production

10X genomics production ⓘ
☒ Single cell gene expression
☐ Single cell gene expression + Cell surface protein

### Reference assembly

Requires a cell ranger arc 2.0.0 reference.

Create cell ranger arc 2.0.0 reference

### Select chemistry

Chemistry ⓘ

Detect automatically ▼

### Advanced options

Option set -- Default -- ▼
[Configure](#)

Back

Finish

Figure 12. Create Cell Ranger ARC reference genome for the first time user.

Clicking the big grey button of **Create Cell Ranger ARC 2.0.0 reference** would pop up a new window where lists the requirements that users need to fill in (Figure 3). To create the same reference genomes (2020-A) that are provided in Cell Ranger by default, the transcriptome annotations are respectively GENCODE v32 for human and vM23 for mouse, which are equivalent to Ensembl 98[3]. If users don't have any options in the dropdown list, they can click **Add annotation model** (GTF file) for **Index**, or **New assembly...** (FASTA file) for **Assembly** and upload the files.

Add Cell Ranger ARC reference ✕

Species

Homo sapiens (human) ▼

Assembly

hg38 ▼

Index ⓘ

☒ Ensembl Transcripts release 91 (Administrator)
☐ Ensembl Transcripts release 94 (Xiaowen Wang)
☐ Ensembl Transcripts release 98 (Zhengbin Liu)
☐ GENCODE Genes - release 32 (Zhengbin Liu)
☐ RefSeq Transcripts 83 - 2017-11-01 (Administrator)
☐ RefSeq Transcripts 92 - 2019-11-01 (Zhengbin Liu)
☐ hg38\_ensembl\_release94\_v2\_1 (Xiaowen Wang)
☐ Add annotation model

Create

Figure 13. Build a new reference assembly with Flow Cell Ranger ARC.

Copyright © 2018 by Partek Incorporated. All Rights Reserved. Reproduction of this material without express written consent from Partek Incorporated is strictly prohibited.

Once the right options has been chosen/provided, simply press the **Create** button to finish. The reference assembly of 'Homo sapiens (human) - hg38' has been created as an example here (Figure 4).

**Genomics production**

10X genomics production *i* ☒ Single cell gene expression ☐ Single cell gene expression + Cell surface protein

**Reference assembly**

Assembly *i* Homo sapiens (human) - hg38

Index GENCODE Genes - release 32 (Zhengbin zliu)

**Select chemistry**

Chemistry *i* Detect automatically

**Advanced options**

Option set -- Default -- [Configure](#)

[Back](#) [Finish](#)

**Advanced options**

Include introns *i* ☐

Expected cells *i*

Force cells *i*

Memory limit(GB) *i*

[Apply](#) [Save as new](#) [Cancel](#)

Figure 14. Create Human reference genome (hg38) for Cell Ranger - Gene Expression.

The main task menu will be refreshed as above (Figure 4) for gene expression data if references have been added. Users can go ahead click the **Finish** button to run the task as default.

While for Feature Barcode data, there are more information needed besides reference assembly. An additional section of **Protein** has been added to the interface if **Single cell gene expression + Cell surface protein** has been selected for Feature Barcode data (Figure 5). Users need firstly push the button **Select data node** and select the correct data for feature of antibody capture or protein in a new pop-up window (top right, Figure 5). Then users need to upload the feature reference file (.csv) prepared for their datasets. A Feature Reference CSV file declares the molecule structure and unique Feature Barcode sequence of each feature present in the experiment. It should include at least six columns: id, name, read, pattern, sequence and feature\_type. An [example of TotalSeq™-B Feature Reference CSV](#) has been linked here. Users can download it by clicking the link and use it as a template for their own data. But for more details, please refer to 10x Genomics webpage[4].

**Genomics production**

10X genomics production *i* ☐ Single cell gene expression ☒ Single cell gene expression + Cell surface protein

**Protein**

Protein data nodes *i* [Select data node](#) [Clear selection](#)

Feature reference file *i* ☒ Partek Flow Server ☐ My Computer ☐ URL

No files selected [Browse](#)

**Reference assembly**

Assembly *i* Homo sapiens (human) - hg38

Index GENCODE Genes - release 32 (Zhengbin zliu)

**Select chemistry**

Chemistry *i* Detect automatically

**Advanced options**

Option set -- Default -- [Configure](#)

[Back](#) [Finish](#)

**Select data node**

[mRNA](#) [Protein](#)

[Select](#) [Cancel](#)

Figure 15. Run Cell Ranger - Gene Expression task for Feature Barcode data with reference assembly hg38 in Flow.

A new data node named **Single cell counts** will be displayed in Flow if the task has been finished successfully (Figure 6). This data node contains a filtered feature barcode count matrix for gene expression data, but a unified feature-barcode matrix that contains gene expression counts alongside Feature Barcode counts for each cell barcode for Feature Barcode data. To open the task report when the task is finished, double click the output data node, or select the **Task report** in the **Task results** section after single clicking the data node. Users then will find the task report (Figure 7) is the same to the 'Summary HTML' from Cell Ranger output.

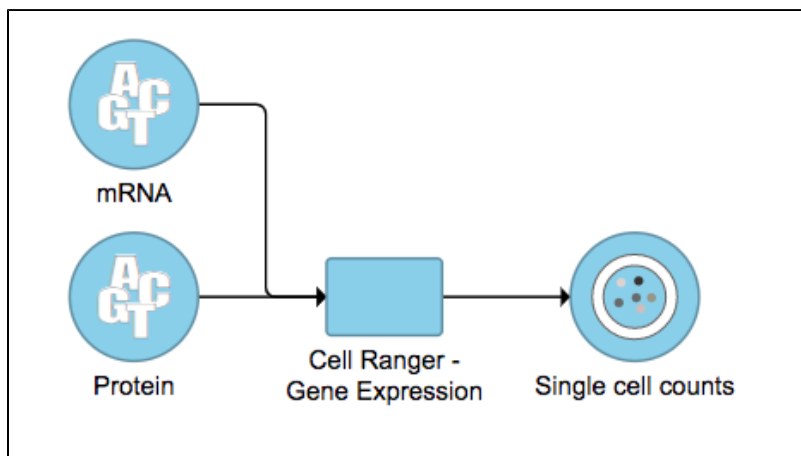


Figure 16. The finished Cell Ranger - Gene Expression task in Flow. Feature Barcode data has been used in the example task here.

## Cell Ranger - Gene Expression task report in Flow

Task report is sample based. Users can use the dropdown list on the top left to switch samples. Under the sample name, there are two tabs on each report - **Summary** report and **Analysis** report (Figure 7). Important information on **Estimated Number of Cells**, **Mean Reads per Cell**, **Median Genes per Cell**, as well as information on **Sequencing**, **Mapping**, and **Sample** are summarized in different panels. The **Barcode Rank Plot** has also been included as an important piece in the **Cells** panel in the **Summary** report (Figure 7).

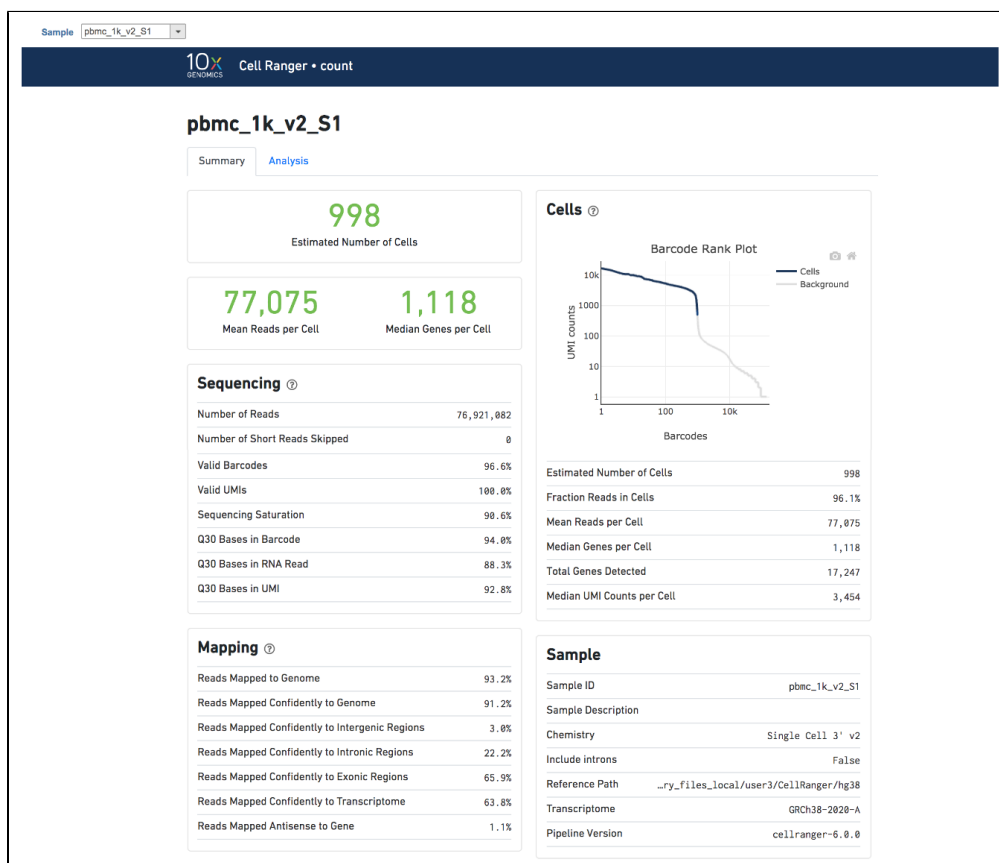


Figure 17. The example report of Cell ranger task in Flow.

Another two plots -biplots of **Sequencing Saturation** and **Median Genes per Cell** to **Mean Reads per Cell** have been included in the **Analysis** report as they are important metrics to library complexity and sequencing depth (Figure 8).

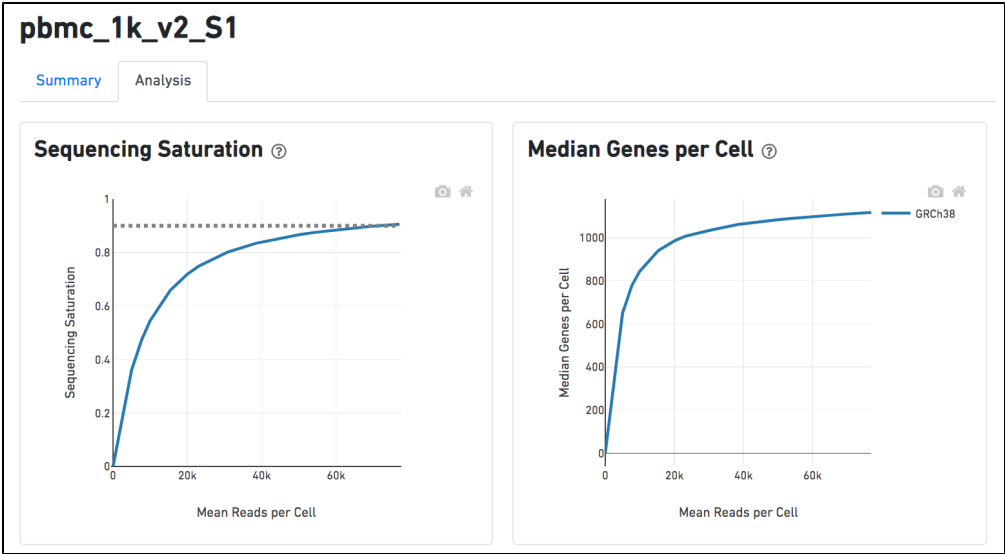



Figure 18. Analysis report of Cell ranger task in Flow.

Details will be exhibited and the panel will be expanded correspondingly if the  icon is clicked. In the example below, the plot of **Median Genes per Cell** has been expanded while the **Sequencing Saturation** plot hasn't (Figure 9).

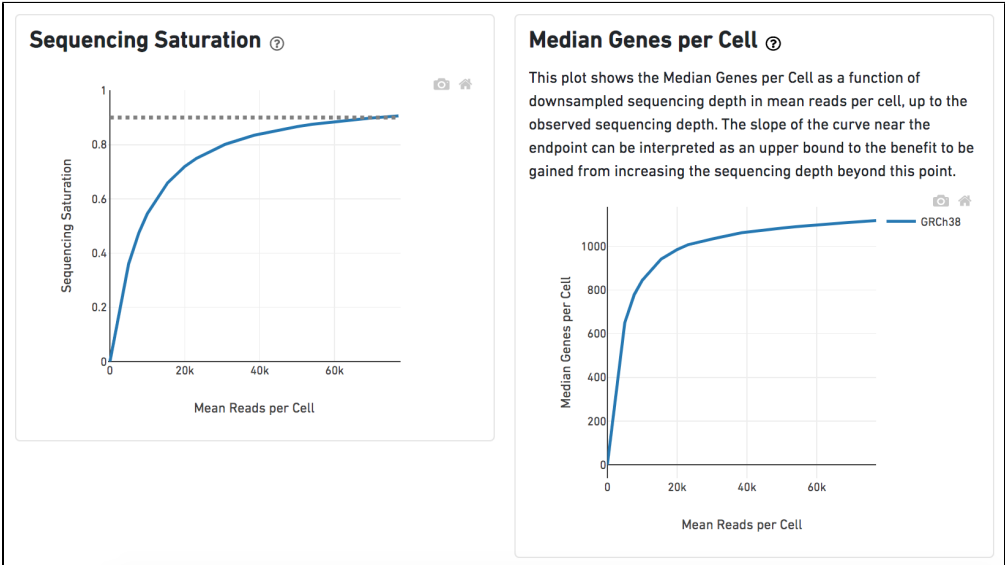


Figure 19. Expanded panel of Cell ranger task report in Flow.

Other than two additional panels summarized information for **Antibody Sequencing** and **Antibody Application** have been added, the task report for Feature Barcode data is the same to scRNA-seq data report.

Antibody Sequencing ?		Antibody Application ?	
Number of Reads	12,606,650	Fraction Antibody Reads	90.2%
Number of Short Reads Skipped	0	Fraction Antibody Reads Usable	55.7%
Valid Barcodes	98.5%	Antibody Reads Usable per Cell	9,815
Valid UMIs	100.0%	Fraction Antibody Reads in Aggregate Barcodes	1.0%
Sequencing Saturation	48.2%	Fraction Unrecognized Antibody	9.8%
Q30 Bases in Barcode	96.6%	Antibody Reads in Cells	62.2%
Q30 Bases in Antibody Read	94.4%	Median UMIs per Cell (summed over all recognized antibody barcodes)	4,360
Q30 Bases in UMI	96.0%		

Figure 20. Additional panels of Cell Ranger - Gene Expression task report for Feature Barcode data in Flow.

Users can click **Configure** to change the default settings in **Advanced options** (Figure 4).

**Include introns:** Count reads mapping to intronic regions. This may improve sensitivity for samples with a significant amount of pre-mRNA molecules, such as nuclei.

**Expected cells:** Expected number of recovered cells. Default: 3,000 cells.

**Force cells:** Force pipeline to use this number of cells, bypassing the cell detection algorithm. Use this if the number of cells estimated by Cell Ranger is not consistent with the barcode rank plot.

**Memory limit (GB):** Restricts **Cell Ranger - Gene Expression** to use specified amount of memory (in GB) to execute pipeline stages.

## References

1. <https://support.10xgenomics.com/single-cell-gene-expression/software/overview/welcome>
2. <https://support.10xgenomics.com/single-cell-gene-expression/software/pipelines/6.0/release-notes>
3. <https://support.10xgenomics.com/single-cell-gene-expression/software/pipelines/4.0/release-notes>
4. <https://support.10xgenomics.com/single-cell-gene-expression/software/pipelines/latest/using/feature-bc-analysis#feature-ref>

## Additional Assistance

If you need additional assistance, please visit [our support page](#) to submit a help ticket or find phone numbers for regional support.



Your Rating:      Results:      16 rates