

Windows Installation

This guide is specific to the installation of Partek Genomics Suite software on a Windows operating system.

Download Partek Genomics Suite

With **administrative privileges**, click the below button to download the latest version of Partek Genomics Suite.

[Download Partek® Genomics Suite®](#)

In some cases, a Microsoft Visual C++ Package failure message may appear (Figure 1). Select "Yes" to continue with the installation.

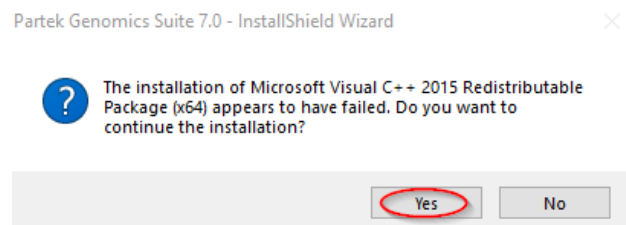


Figure 1. Continue installing Partek Genomics Suite

Run the Partek Genomics Suite Application

Once the download is completed, start the application by double clicking on the **Partek Genomics Suite** application icon located on your desktop. The default Partek License Manager window will appear. You will be prompted to provide a license file.

1. **Save** the license.dat (or license.lic) file that you received from the Partek Licensing department to your desktop.

- If you do not have license, please contact your account representative or [request a trial](#).

2. Select **Add License** (Figure 2).

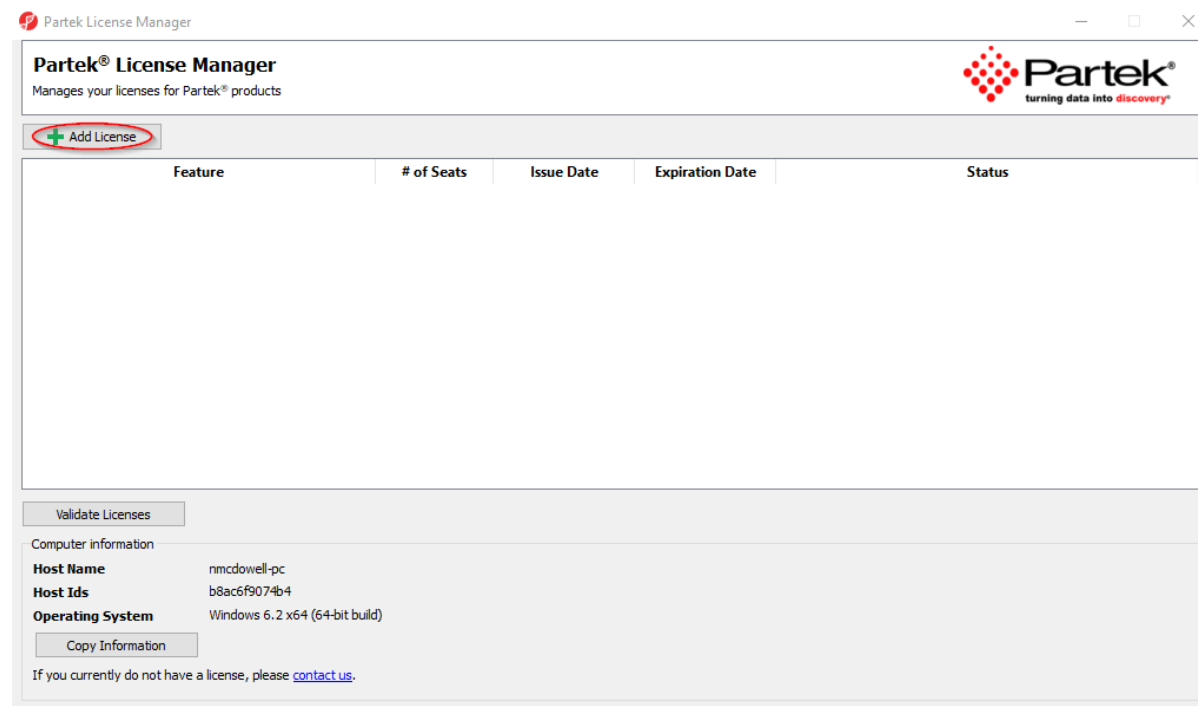


Figure 2. Add License

3. Select the **License file** radio button.

4. Select **Browse**.

5. Click on the the license.dat (or license.lic) file located on your desktop and select **Open** (Figure 3).

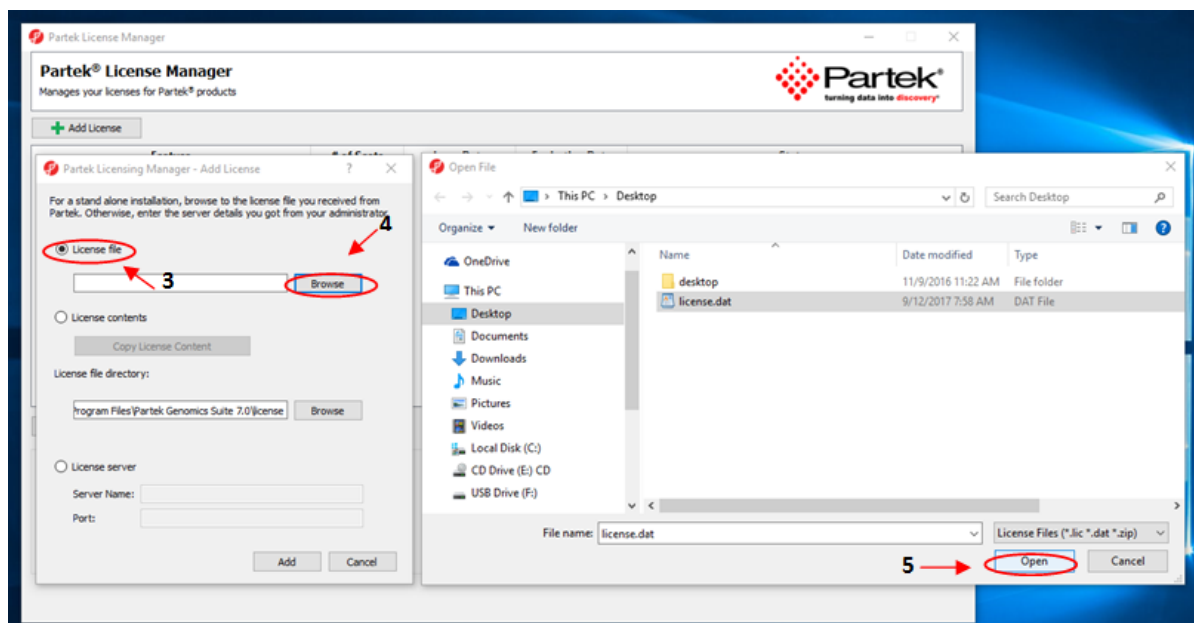


Figure 3. Open license.dat

6. The Partek License Manager - Add License screen will appear. Select **Add** (Figure 4).

- License file path: C:/Users/username/Desktop/license.dat
- License file directory: C:\Program Files\Partek Genomics Suite 7.0\license

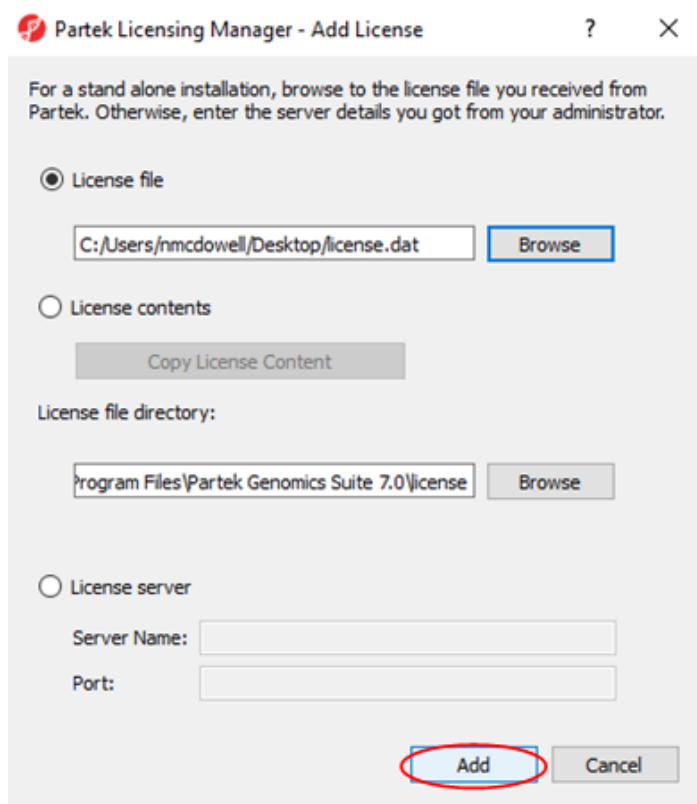


Figure 4. License file path & directory

The Partek License Manager window will now show you the status of your license (Figure 5).

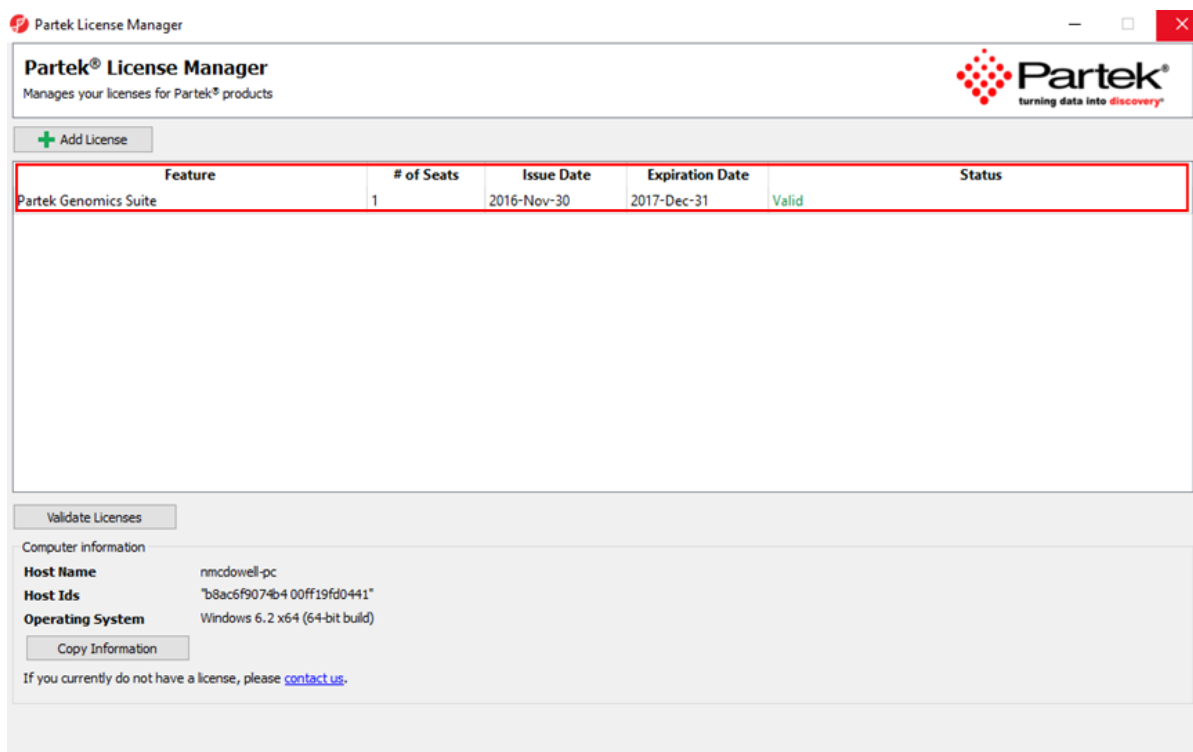


Figure 5. Status of license

7. **Exit** the Partek License Manager and Partek Genomics Suite will automatically start.

Once the software has been installed and the license has been added, you may delete the license.dat (or license.lic) file from your desktop (if you prefer, this is not required); a copy of your license file is saved to your license file folder (C:\Program Files\Partek Genomics Suite 7.0\license folder) after it has been added using the Partek License Manager.

Additional Assistance

If you need additional assistance, please visit [our support page](#) to submit a help ticket or find phone numbers for regional support.