

Removing batch effects

- Using the Remove Batch Effect tool
- Batch effects in PCA
- Batch effects in ANOVA results visualizations

By including *Batch* in the ANOVA model, the variability due to the batch effect is accounted for when calculating p-values for the non-random factors. In this sense, the batch effect has already been removed. However, visualizing biological effects can be very difficult if batch effects are present in the original intensity data used to generate visualizations. We can modify the original intensity data to remove the batch effect using the *Remove Batch Effect* tool.

Using the Remove Batch Effect tool

The *Remove Batch Effect* tool functions much like ANOVA in reverse, calculating the variation attributed to the factor being removed then adjusting the original intensity values to remove the variation. Once the variation caused by the batch effect has been removed, tools like PCA or clustering can be used to visualize what the data would look like if the batch effect was not present.

- Select the **1 (Breast_Cancer.txt)** spreadsheet
- Select **Stat** from the main tool bar
- Select **Remove Batch Effect...** (Figure 1)

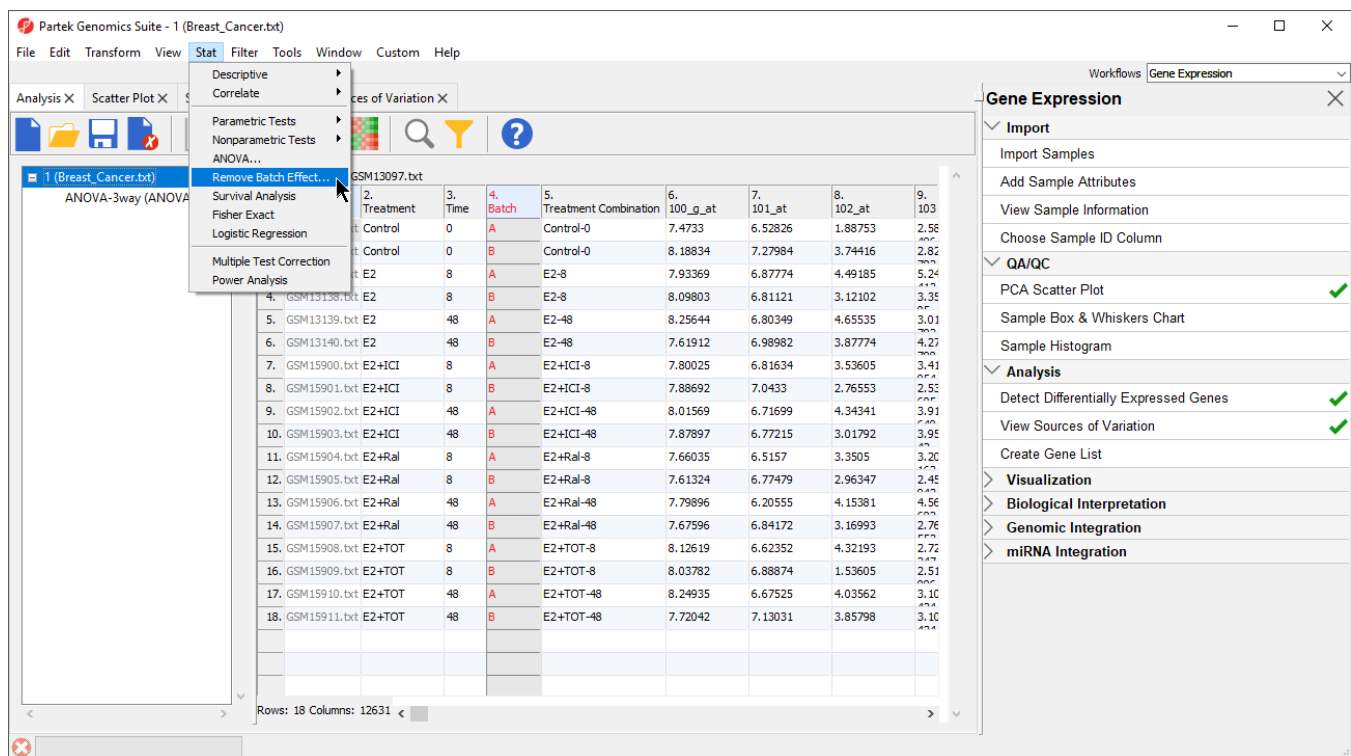


Figure 14. Invoking the Remove Batch Effect tool

The *Remove Batch Effects* dialog will open. The tool functions by performing an ANOVA then modifying the original intensities values to remove the effects of the specified factor(s).

- Select **Treatment**, **Time**, and **Batch**
- Select **Add Factor >** to add them to the *ANOVA Factor(s)* panel
- Select **Batch** in the *ANOVA Factor(s)* panel
- Select **Add Factor >** to add *Batch* to the *Remove Effect(s) of These Factor(s)* panel

By default, the results will be displayed in a new spreadsheet. Options to overwrite the current spreadsheet and specify the output file appear in the bottom of the dialog (Figure 2).

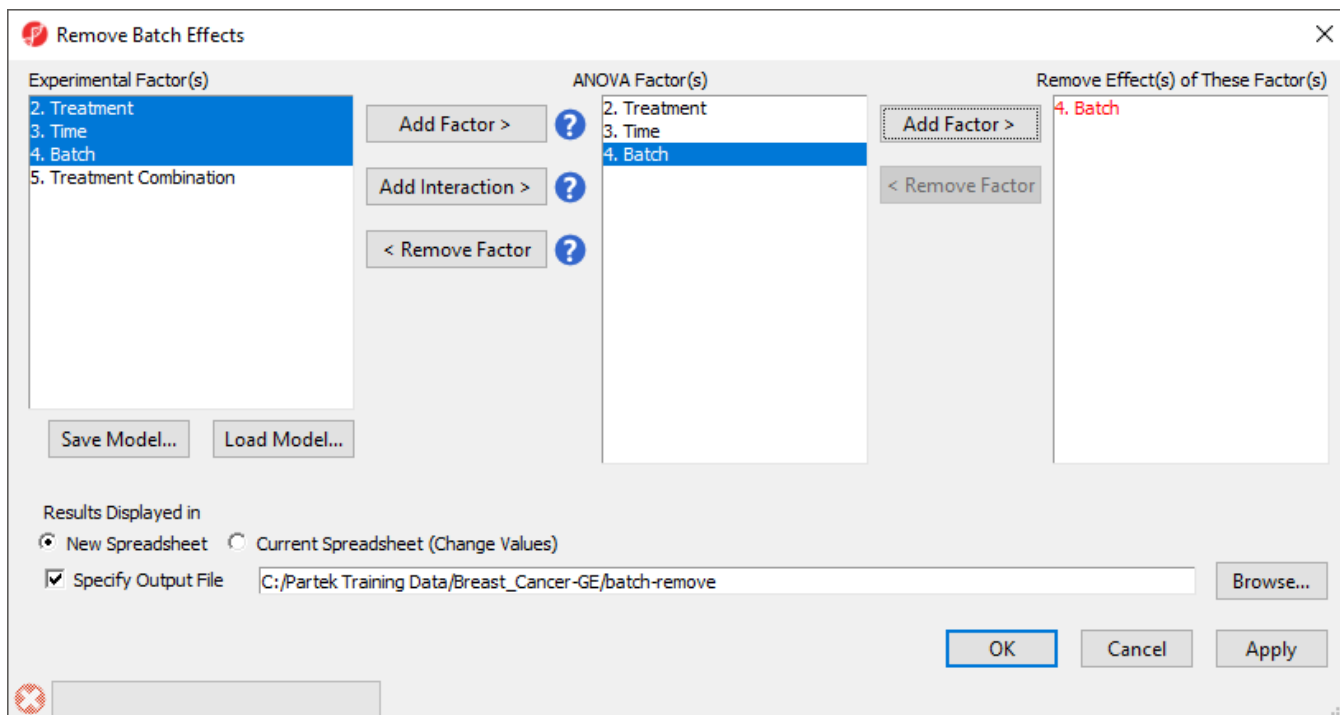


Figure 15. Configuring the Remove Batch Effects tool to remove Batch and create a new spreadsheet

- Select **OK**



The new spreadsheet, *1-removeresult (batch-remove)* will open in the *Analysis* tab (Figure 3).

1. Filename	2. Treatment	3. Time	4. Batch	5. Treatment Combination	6. 100_g_at	7. 101_at	8. 102_at	9. 103_at
1. GSM13097.txt	Control	0	A	Control-0	7.44022	6.6821	1.51407	2.36
2. GSM13098.txt	Control	0	B	Control-0	8.22142	7.126	4.11762	3.04
3. GSM13099.txt	E2	8	A	E2-8	7.90061	7.03158	4.11839	5.02
4. GSM13138.txt	E2	8	B	E2-8	8.13111	6.65737	3.49448	3.57
5. GSM13139.txt	E2	48	A	E2-48	8.22336	6.95733	4.28189	2.75
6. GSM13140.txt	E2	48	B	E2-48	7.6522	6.83598	4.2512	4.46
7. GSM15900.txt	E2+ICI	8	A	E2+ICI-8	7.76717	6.97018	3.16259	3.15
8. GSM15901.txt	E2+ICI	8	B	E2+ICI-8	7.92	6.88946	3.13899	2.75
9. GSM15902.txt	E2+ICI	48	A	E2+ICI-48	7.98261	6.87083	3.96995	3.65
10. GSM15903.txt	E2+ICI	48	B	E2+ICI-48	7.91205	6.61831	3.39138	4.17
11. GSM15904.txt	E2+Ral	8	A	E2+Ral-8	7.62727	6.66954	2.97704	2.97
12. GSM15905.txt	E2+Ral	8	B	E2+Ral-8	7.64632	6.62095	3.33693	2.68
13. GSM15906.txt	E2+Ral	48	A	E2+Ral-48	7.76588	6.35939	3.78035	4.34
14. GSM15907.txt	E2+Ral	48	B	E2+Ral-48	7.70904	6.68788	3.54339	2.98
15. GSM15908.txt	E2+TOT	8	A	E2+TOT-8	8.09311	6.77736	3.94847	2.50
16. GSM15909.txt	E2+TOT	8	B	E2+TOT-8	8.0709	6.7349	1.90951	2.73
17. GSM15910.txt	E2+TOT	48	A	E2+TOT-48	8.21627	6.82909	3.66216	2.88
18. GSM15911.txt	E2+TOT	48	B	E2+TOT-48	7.7535	6.97647	4.23144	3.32

Figure 16. Viewing the new spreadsheet with batch effects removed

Batch effects in PCA

We can visualize the effects of removing the batch effects using PCA.

- Select **1 (Breast_Cancer.txt)** from the spreadsheet tree
- Select  plot the PCA scatter plot
- Select 
- Set *Drawing Mode* to **Mixed**
- Select the **Ellipsoids** tab
- Select **Add Centroid**
- Add **Batch** to the *Grouping Variable(s)* panel
- Set the colors of the two centroids as shown (Figure 4) to pink and yellow

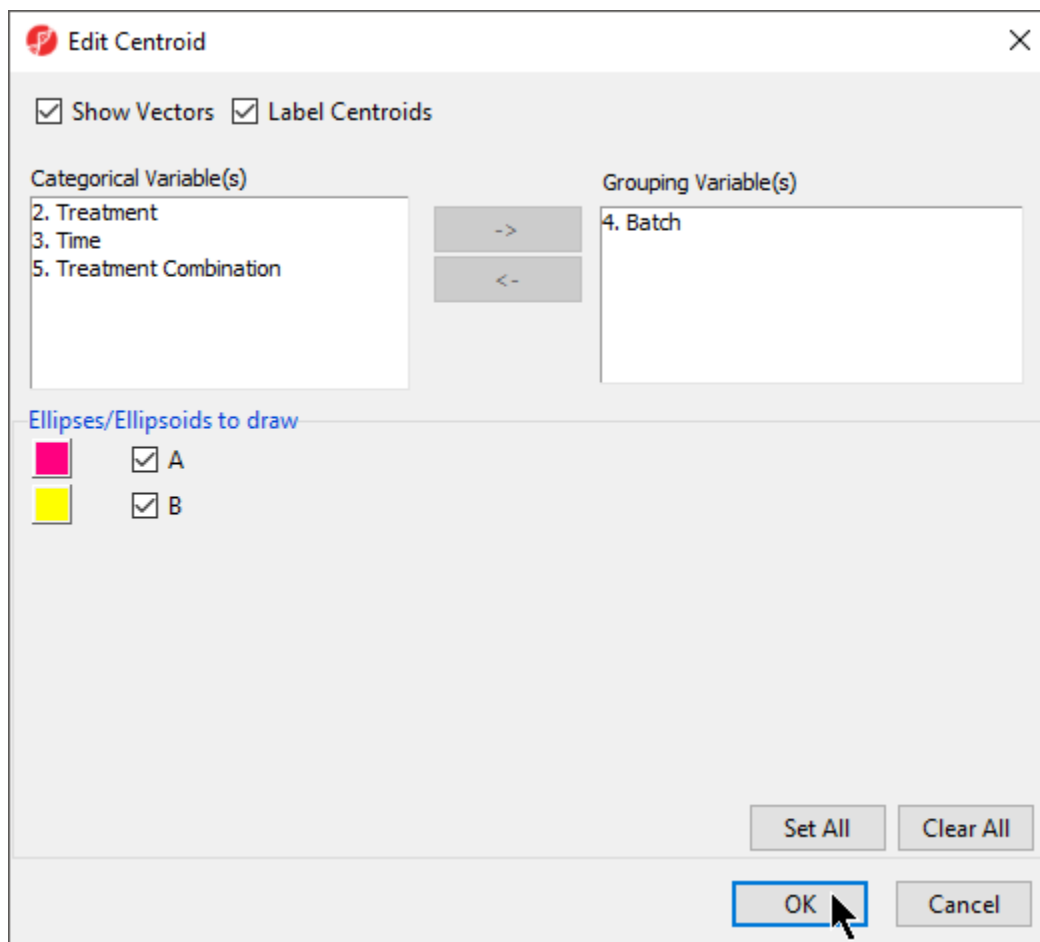


Figure 17. Adding a centroid for Batch

- Select **OK** to close the *Add Centroid...*
- Select **OK** to close the *Configure Plot Properties* dialog

The two centroids are distinct, showing the batch effect (Figure 5).

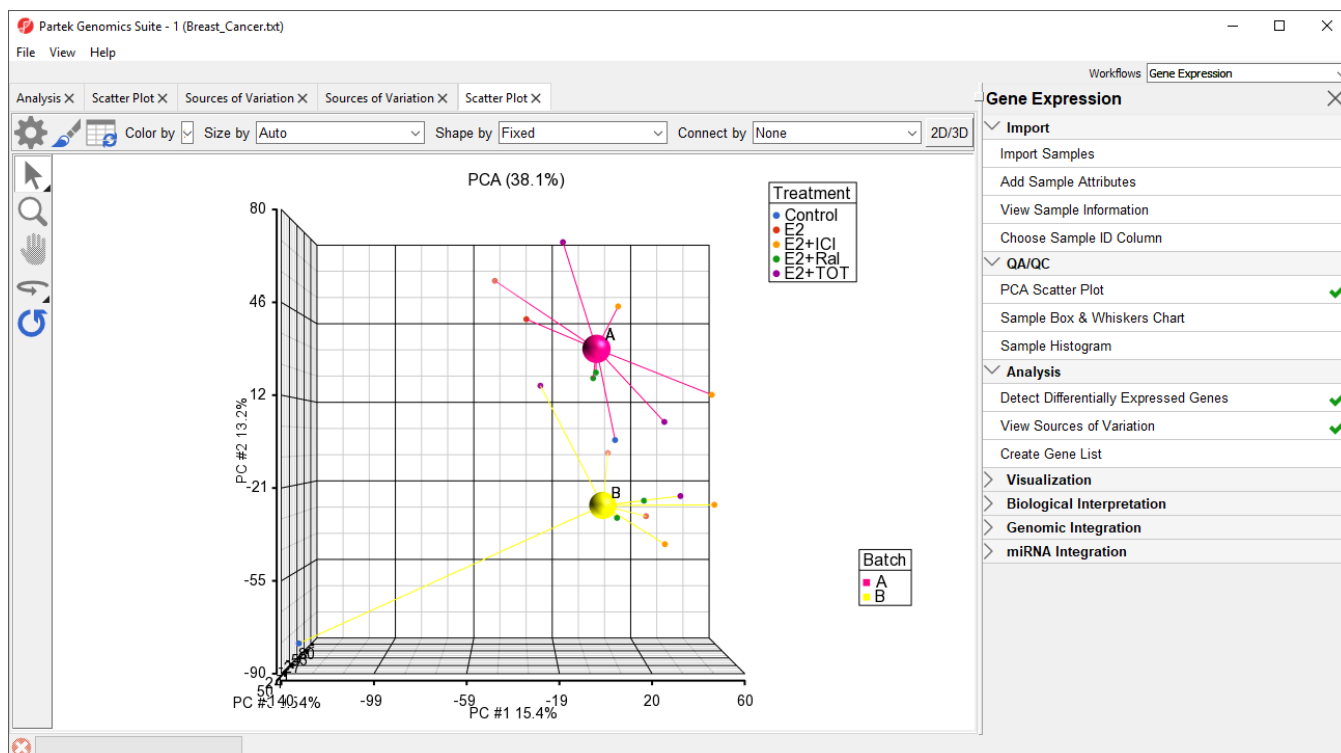


Figure 18. Viewing a batch effect using PCA. The batches are shown as the pink (A) and yellow (B) centroids. The clear separation of the centroids indicates a batch effect

- Repeat the above steps for **1-removeresult (batch-remove)**

For *1-removeresult (batch-remove)*, the centroids of the two batches overlap, showing that the batch effect has been removed (Figure 6).

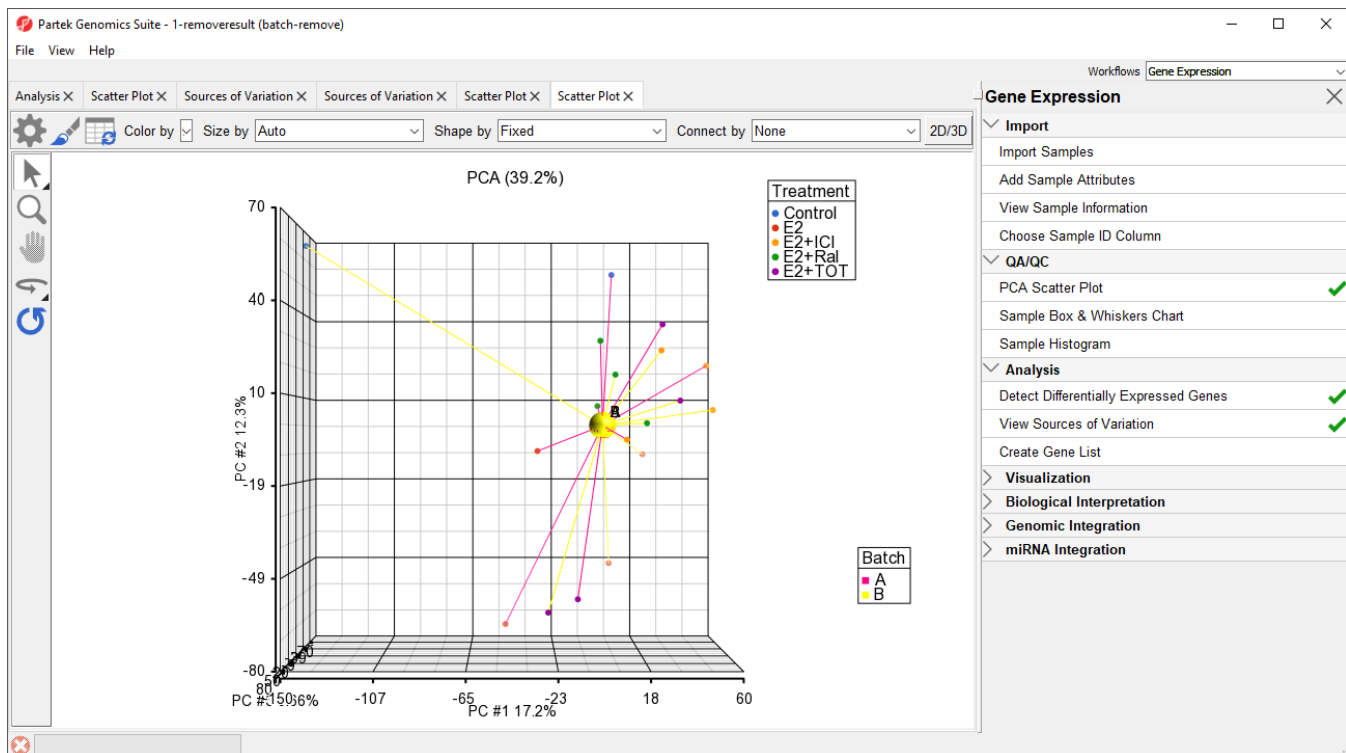


Figure 19. Overlapping centroids for batches A and B show that the batch effect has been removed.

Batch effects in ANOVA results visualizations

Visualization of ANOVA results for single probe(set)s/genes also benefits from batch removal. To illustrate this, we first need to repeat our ANOVA using the new *batch-remove* intensity values spreadsheet.

- Select the **Analysis** tab
- Select **1-removeresult (batch-remove)** in the spreadsheet tree
- Select **Stat** from the main toolbar
- Select **ANOVA...**
- Add **Treatment**, **Time**, and **Batch** factors to the *ANOVA Factor(s)* panel
- Add **Treatment * Time** interaction to the *ANOVA Factor(s)* panel
- Select **Contrasts...**
- Select **Treatment** from the *Select Factor/Interaction* drop-down menu
- Select **Yes** for *Data is already log transformed?*
- Set up contrasts of treatment vs. control for *E2*, *E2+ICI*, *E2+Ral*, and *E2+TOT* (Figure 7)

Configure of Spreadsheet 1-removeresult

Data is already log transformed? ☒ Yes ☐ No Base Report comparisons as: ☒ Fold change ☐ Difference

Other Statistics ☐ Estimate ☐ F ratio ☐ T statistic ☐ 95% CI for Fold change

Select Factor/Interaction:

Candidate Level(s)

Control	Add Contrast Level >	< Remove Contrast Level
E2		
E2+ICI		
E2+Ral		
E2+TOT		

Add Contrast Add Combinations

Contrast Name	Factor/Interaction	Status	Delete
E2 vs. Control	2. Treatment	Non-Estimable(p-value ratio {folc	
E2+ICI vs. Control	2. Treatment	Non-Estimable(p-value ratio {folc	
E2+Ral vs. Control	2. Treatment	Non-Estimable(p-value ratio {folc	
E2+TOT vs. Control	2. Treatment	Non-Estimable(p-value ratio {folc	

OK Cancel

Figure 20. Configuring ANOVA to comparing treatment groups to control

- Select **OK** to add contrasts
- Change output file name to **ANOVAResults_batch-remove**
- Select **OK** to perform the ANOVA

The *ANOVAResults_batch-remove* spreadsheet will open in the *Analysis* tab.

- Select the **ANOVAResults** spreadsheet
- Right-click on the row header for row 2, *TFF1*
- Select **Dot Plot (Orig. Data)** (Figure 8)

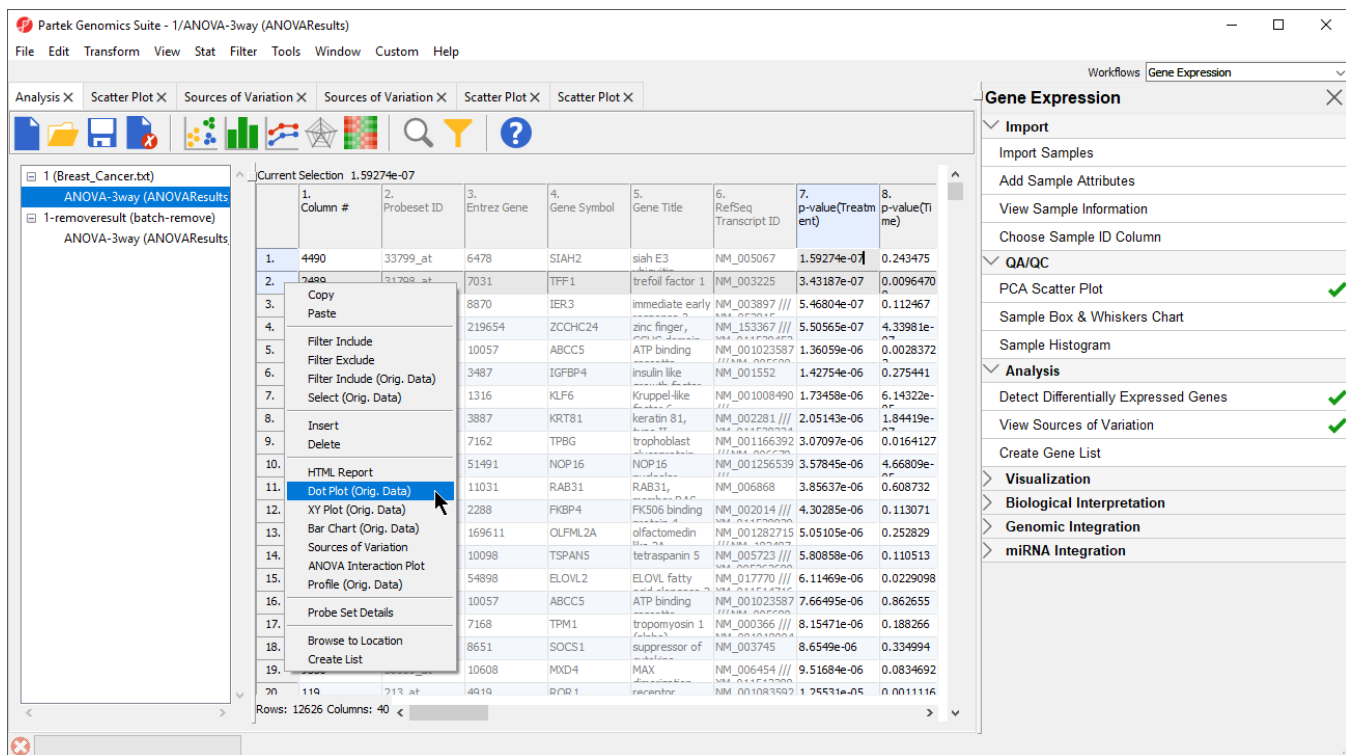


Figure 21. Invoking a dot plot from the ANOVAResults spreadsheet

A dot plot for trefoil factor 1 (TFF1) will open (Figure 9). The dot plot shows gene intensity values (y-axis) for each sample. Samples are grouped by *Treatment*.

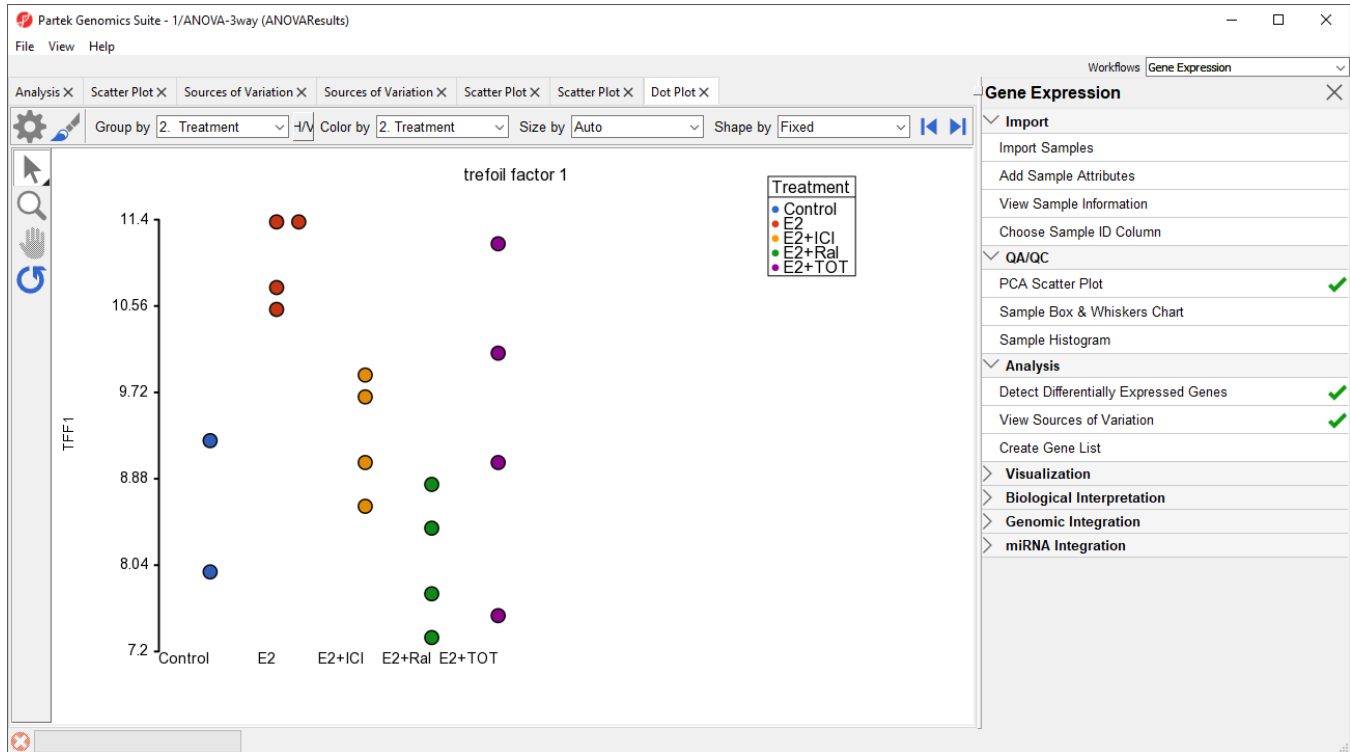



Figure 22. Viewing the dot plot for trefoil factor 1 (TFF1) across different treatment groups

To visualize the batch effect we will make a few changes to the plot.

- Select **H/V** to switch the horizontal and vertical axis
- Select 
- Set **Color** to **Batch**
- Set **Size** to **Time**
- Set **Connect** to **Treatment Combination** (Figure 10)

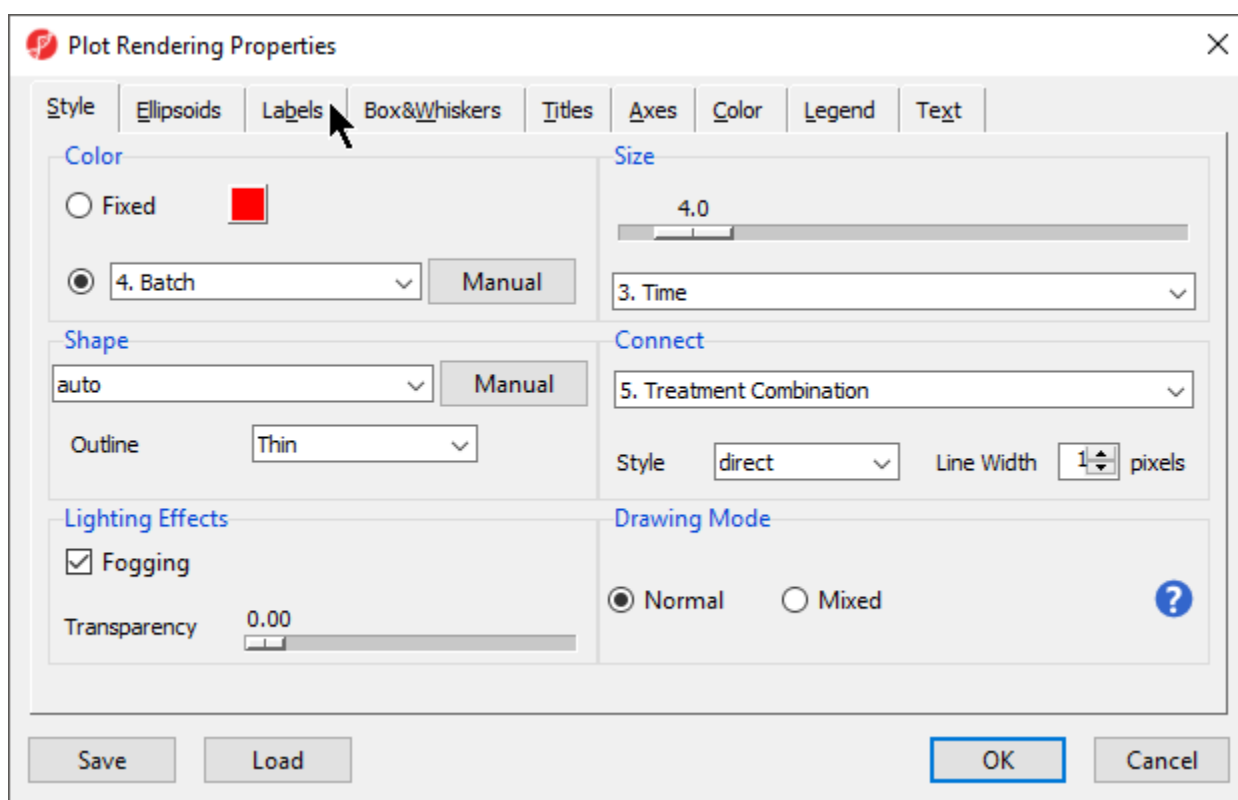


Figure 23. Configuring the dot plot (part 1 of 2)

- Select the **Labels** tab
- Select **Column** for *In Point Labels*
- Select **Time** from the *Column* drop-down list (Figure 11)

Plot Rendering Properties [X]

Style | Ellipsoids | **Labels** | Box&Whiskers | Titles | Axes | Color | Legend | Text

Label Font Size: 14

Point Labels

Points to Label: Selected Label Offset: 3

Letters / Digits: ☒ Show all ☐ Limit to 1 characters

Label Format: ☒ Row # ☐ Row Name ☐ Column 1. Filename

In Point Labels

Letters / Digits: ☒ Show all ☐ Limit to 1 characters

In Point Label: ☐ None ☐ Row # ☐ Row Name ☒ Column 3. Time

☐ Rotate Point Labels 0 degrees

Save Load OK Cancel

Figure 24. Configuring the dot plot (part 2 of 2)

- Select **OK**

The dot plot now clearly shows the batch effect (Figure 12). Samples within treatment groups are separated clearly between the two batches shown in blue and red.

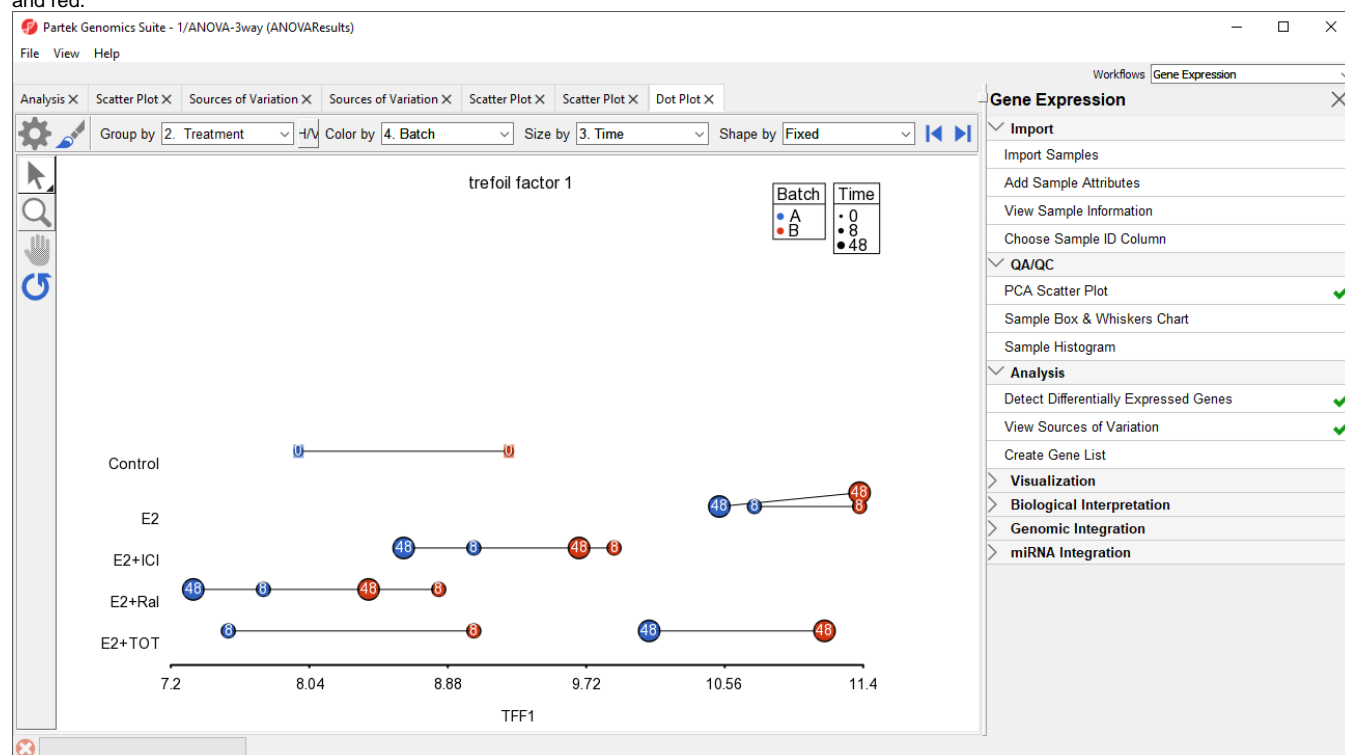


Figure 25. Viewing a dot plot showing a batch effect. Each dot is a sample. The y-axis is treatment combinations; the x-axis is the expression value of the TFF1 gene. Dots are colored by batch, sized by time, connected by treatment combination, and labeled by time.

To view the effects of batch removal, we can view this dot plot for the *ANOVAResults_batch-remove* spreadsheet.

- Select the **Analysis** tab
- Select **ANOVA-3way (ANOVAResults_batch-remove)** from the spreadsheet tree
- Repeat the steps shown above to create the dot plot for trefoil factor 1

The dot plot invoked from the *ANOVAResults_batch-remove* spreadsheet shows that the batch effect has been removed as all the samples no longer clearly separate by color within treatment groups (Figure 13).

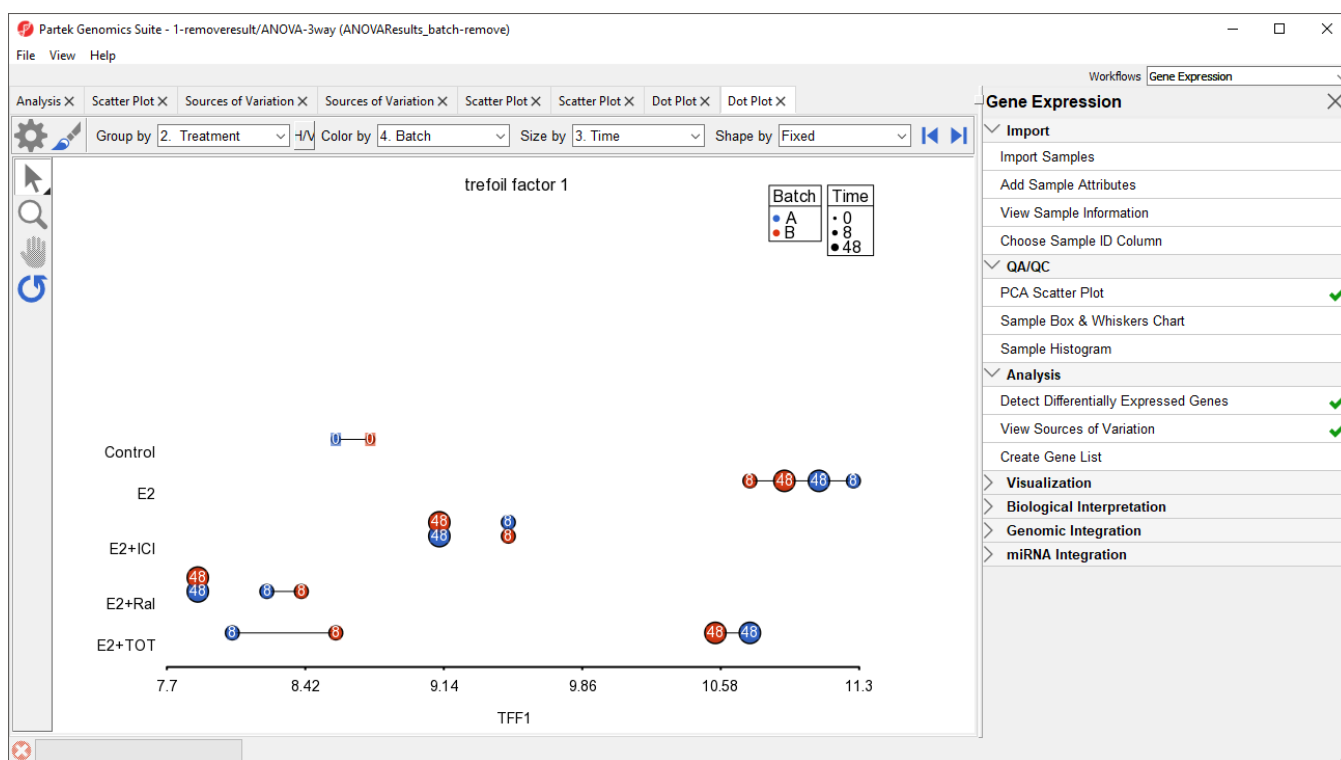


Figure 26. Viewing the dot plot that shows batch effect removal. The plot configuration matches Figure 12.

« Detect differentially expressed genes with ANOVA Creating a gene list using the Venn Diagram »

Additional Assistance

If you need additional assistance, please visit [our support page](#) to submit a help ticket or find phone numbers for regional support.



Your Rating:



Results:



40 rates