

# Client Computer Connection to License Server

This guide is specific to the client computer connection instructions to a floating concurrent Partek Genomics Suite license server.

## Download Partek Genomics Suite

With **administrative privileges**, download the [latest version of Partek Genomics Suite](#).

## Run the Partek Genomics Suite Application

Once the download is completed, start the application by clicking on the **Partek Genomics Suite** icon. The default Partek License Manager window will appear. You will be prompted to provide a license (figure 1).

1. Select **Add License**.
  2. Select the **License server** radio button.
  3. Enter the **Server Name** and select **Add**.
- You will need to obtain the server name from your license server administrator.

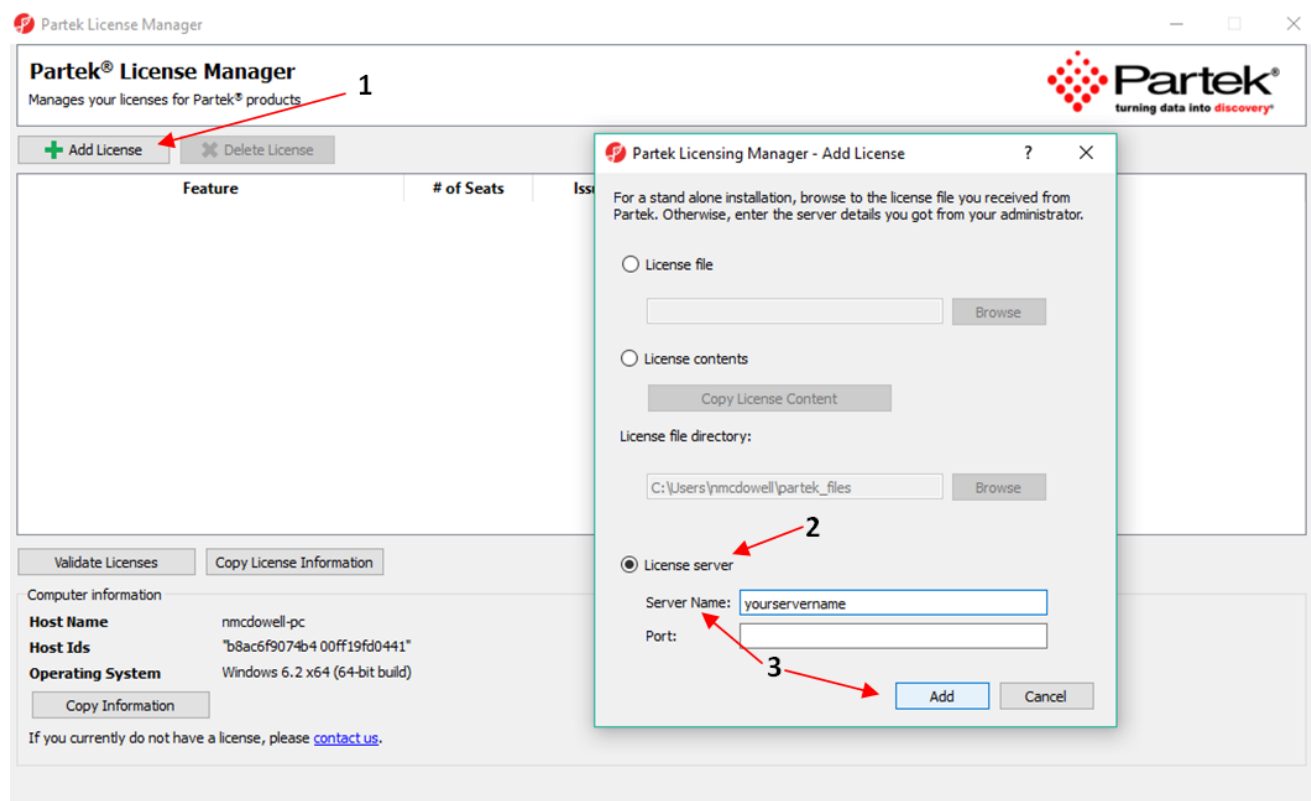


Figure 1. Add License

## Additional Assistance

If you need additional assistance, please visit [our support page](#) to submit a help ticket or find phone numbers for regional support.