

Adding gene annotations

During data importation, the GeneChip annotation file was linked to the imported data. This linked annotation information can be added as new columns to the ANOVA or gene list spreadsheets. For example, we can add additional annotation to the gene list we created from the ANOVA results as follows:

- In the *Down_Syndrome_vs_Normal (A)* spreadsheet, right click on the second column header *2. ProbesetID* and select **Insert Annotation** from the pop-up menu (Figure 3)

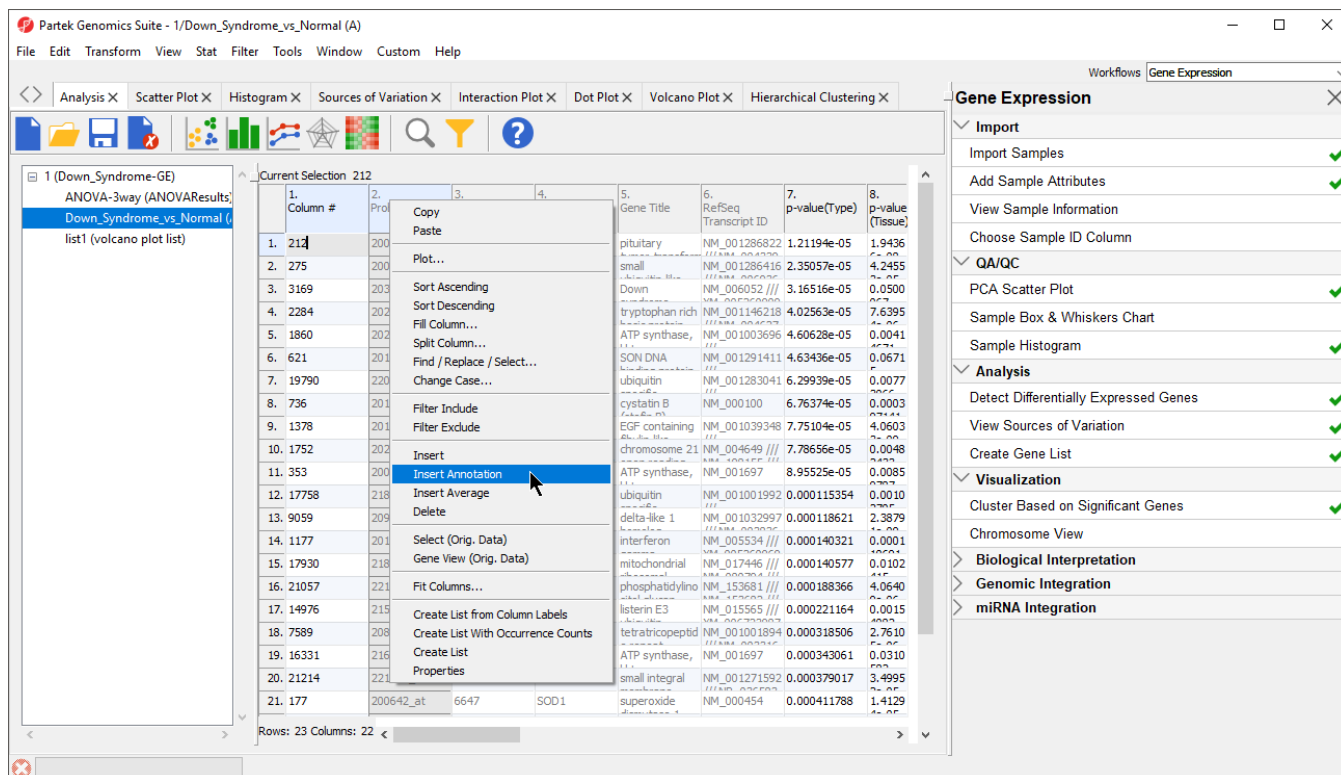


Figure 3. Inserting an annotation

- Select **Chromosomal Location** under the *Column Configuration* panel (Figure 4). Leave everything else as default
- Select **OK**

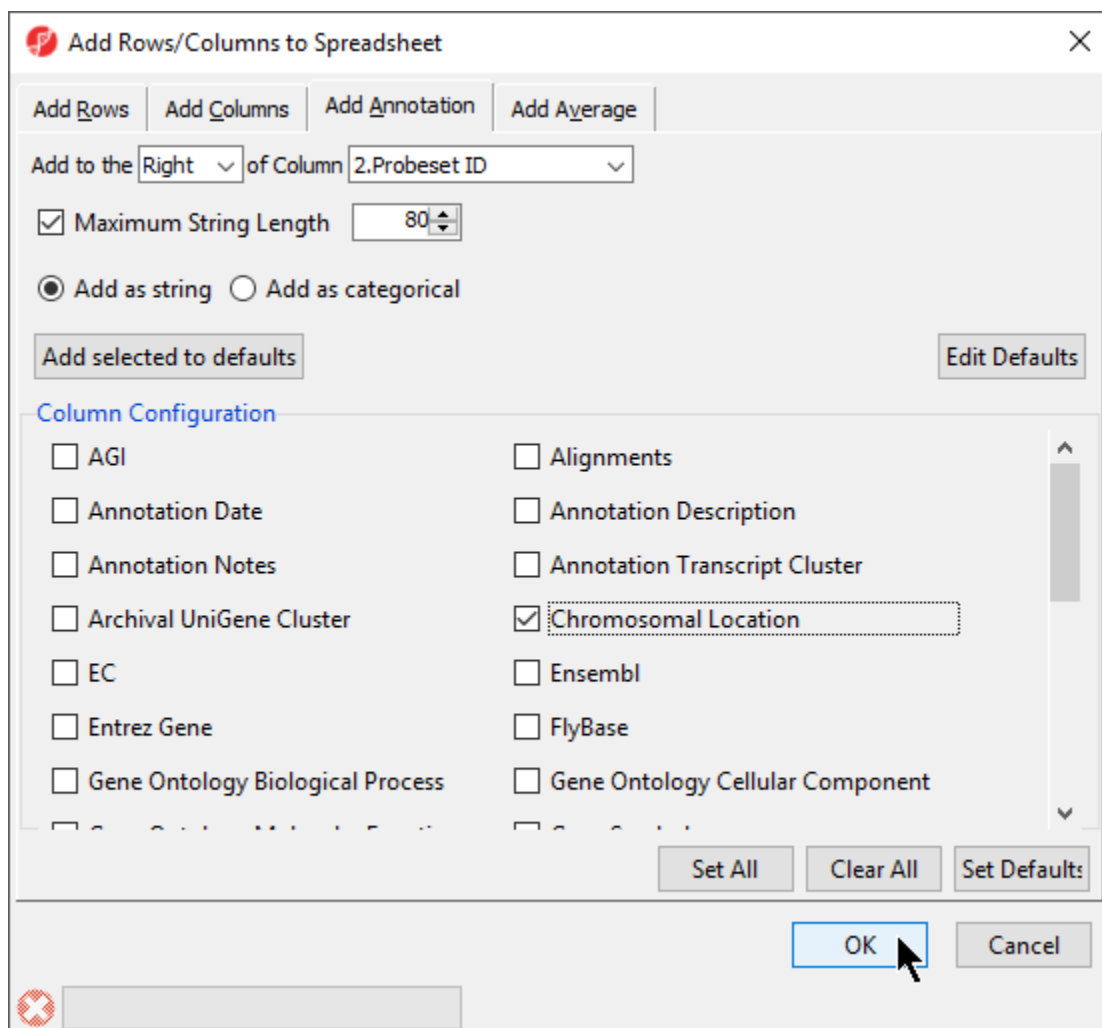



Figure 4. Adding Chromosomal Location annotation

Interestingly, of the 23 genes of the *Down_Syndrome_vs_Normal (A)* spreadsheet, 20 genes are located on chromosome 21. This suggests that the gene expression changes associated with Down syndrome observed in this study are primarily located on chromosome 21, not distributed throughout the genome, an important finding of this study.

To save changes to the spreadsheet, select the Save Active Spreadsheet icon ().

Additional Assistance

If you need additional assistance, please visit [our support page](#) to submit a help ticket or find phone numbers for regional support.



Your Rating:  Results:  36 rates