

Tasks available for a gene list

- [GO Enrichment](#)
- [Pathway Enrichment](#)
- [Filtering](#)
- [Applying Multiple Test Correction](#)
- [Plotting numeric data associated with a gene list](#)
- [Genome Browser](#)
- [Clustering](#)

GO Enrichment

The Gene Ontology (GO) Enrichment p-value calculation uses either a Chi-Square or Fisher's Exact test to compare the genes included in the significant gene list to all possible genes present in the experiment or the background genes. For a microarray experiment, background genes consists of all genes on the chip/array; for a next generation sequencing experiment, all genes in the species transcriptome are considered background genes.

Because the calculation is essentially comparing overlapping sets of genes and does not use intensity values, GO Enrichment can be performed on an imported gene list even without any numerical values. GO Enrichment is available through the *Gene Expression* workflow.

If no annotation file has been specified for the gene list, GO Enrichment will use the full species transcriptome as the background genes. While suitable for next generation sequencing experiments, for microarray experiments, only the genes on the chip/array are appropriate. Please contact our technical support department for assistance with this step if needed.

Pathway Enrichment

Like GO Enrichment, Pathway Enrichment does not require numerical values, but instead operates on lists of genes - a list of significant genes vs. background genes. Consequently, Pathway Enrichment may be used with an imported list of genes even without any numerical values. The list of background genes is set to the species transcriptome by default, but can be set to a specific set of genes if the gene list has been associated with an annotation file.

Filtering

A gene list can be used to filter another spreadsheet. As an example, we will filter the results of an ANOVA on microarray data using a gene list. This will create a spreadsheet with ANOVA results for only the genes included in our gene list.

- Open the filtering gene list and target spreadsheets
- Select the target spreadsheet in the spreadsheet tree, in this example, genes are on rows in ANOVA result spreadsheet
- Select **Filter** from the main toolbar
- Select **Filter Rows Based on a List...** from **Filter Rows** (Figure 1)

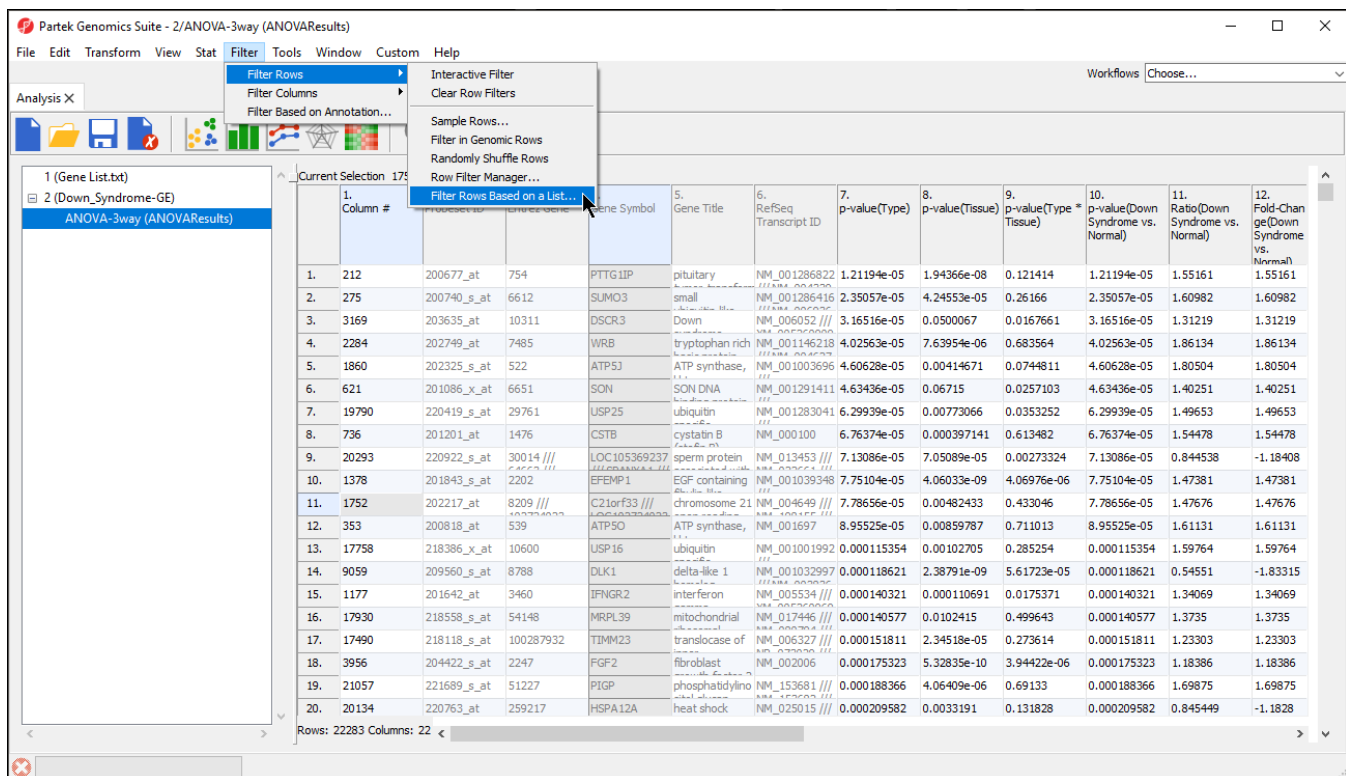


Figure 5. Filtering rows based on a list

- Select the matching column of your target spreadsheet from the *Key column* drop-down menu; here we have selected **4. Gene Symbol** (Figure 2)
- Select the filtering gene list from the *Filter based on spreadsheet* drop-down menu; here we have selected **1 (Gene List.txt)**
- Select the matching column of your filtering gene list from the *Key column* drop-down menu; here we have selected **1. Symbol**

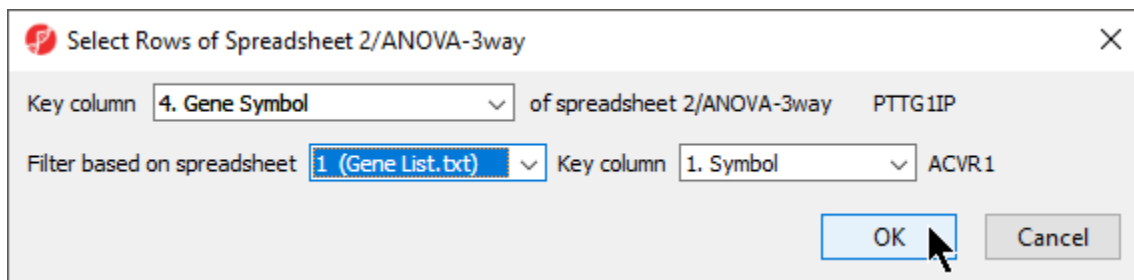


Figure 6. Selecting matching rows from filtering and target spreadsheets

- Select **OK** to apply the filter

The target spreadsheet will display the filtered rows (Figure 3). Note that the number of rows has gone from 22,283 prior to filtering (Figure 1) to 153 after filtering (Figure 3).

1. Column #	2. Probeset ID	3. Entrez Gene	4. Gene Symbol	5. Gene Title	6. RefSeq Transcript ID	7. p-value(Type)	8. p-value(Tissue)	9. p-value(Type * Tissue)	10. p-value(Down Syndrome vs. Normal)	11. Ratio(Down Syndrome vs. Normal)	12. Fold-Change(Down Syndrome vs. Normal)
1.	1000	201465_s_at	JUN	jun	NM_002228	0.00276405	0.00468229	0.113999	0.00276405	0.773342	-1.29309
2.	8806	209305_s_at	GADD45B	growth arrest and DNA damage-inducible 45B	NM_015675	0.00316328	2.67727e-05	0.594121	0.00316328	0.785082	-1.27375
3.	4931	205397_x_at	SMAD3	SMAD family member 3	NM_001145102	0.0072648	0.00156764	0.271038	0.0072648	0.839212	-1.19159
4.	22241	AFFX-HUMISGF1A.1	STAT1	signal transducer and activator of transcription 1	NM_007315	0.0117861	4.03509e-08	0.0527963	0.0117861	1.13528	1.13528
5.	10700	211260_at	BMP7	bone morphogenetic protein 7	NM_001719	0.0130345	0.00821726	0.187847	0.0130345	0.901294	-1.10952
6.	4265	204731_at	TGFB3	transforming growth factor beta 3	NM_001195683	0.0135102	0.000922318	0.694707	0.0135102	0.831716	-1.20233
7.	4930	205396_at	SMAD3	SMAD family member 3	NM_001145102	0.0171952	0.263499	0.170553	0.0171952	0.871235	-1.1478
8.	21042	221674_s_at	CHRD	chordin	NM_001304472	0.0174254	0.209042	0.611109	0.0174254	0.927927	-1.07767
9.	9242	209747_at	TGFB3	transforming growth factor beta 3	NM_003239	0.0237967	2.1632e-05	0.065672	0.0237967	0.874731	-1.14321
10.	4824	205290_s_at	BMP2	bone morphogenetic protein 2	NM_001200	0.0316624	0.0628251	0.542975	0.0316624	0.853061	-1.17225
11.	3469	203935_at	ACVR1	activin A receptor type 1	NM_001105	0.0481196	0.0142217	0.456649	0.0481196	1.24099	1.24099
12.	7940	208434_at	MECOM	MDS1 and EVI1	NM_001105077	0.0502184	0.304578	0.0881724	0.0502184	0.922198	-1.08437
13.	9147	209651_at	TGFB1	transforming growth factor beta 1	NM_001042454	0.0514346	4.355e-09	0.297309	0.0514346	1.24158	1.24158
14.	2222	202687_s_at	TNFSF10	tumor necrosis factor superfamily member 10	NM_001190942	0.0546648	0.0197439	0.0296169	0.0546648	1.09811	1.09811
15.	10305	210838_s_at	ACVR1	activin A receptor type 1	NM_000020	0.0569891	0.0239596	0.0999182	0.0569891	0.907874	-1.10147
16.	15065	215685_s_at	DLX2	distal-less homeobox 2	NM_004405	0.0590513	0.0575855	0.304606	0.0590513	0.903221	-1.10715
17.	10699	211259_s_at	BMP7	bone morphogenetic protein 7	NM_001719	0.0726008	0.00129412	0.353554	0.0726008	0.924517	-1.08165
18.	8835	209335_at	DCN	decorin	NM_001920	0.0727882	4.35538e-09	0.000596523	0.0727882	1.13119	1.13119
19.	5801	206268_at	LEFTY1	left-right determination factor 1	NM_020997	0.0731086	0.0636334	0.728535	0.0731086	0.92232	-1.08422
20.	4460	204926_at	INHBA	inhibin beta A	NM_002192	0.0854303	0.331248	0.784966	0.0854303	0.952633	-1.04972

Figure 7. Filtered spreadsheet. The black bar on the right-hand side of the spreadsheet shows the fraction of filtered-out samples in black vs. the retained samples in yellow.

To use this filtered list for downstream analysis, we can save it.

- Right-click the open spreadsheet in the spreadsheet tree
- Select **Clone...**
- Use the *Clone Spreadsheet* dialog to name the new spreadsheet and choose its place in the spreadsheet hierarchy
- Select **OK**

The new spreadsheet will open. If you want to use the new spreadsheet again in the future, be sure to save it.

Applying Multiple Test Correction

If your imported data contains a list of p-values, you can use any of the available multiple test corrections.

- Select **Stat** from the main toolbar

- Select **Multiple Test**
- Select **Multiple Test Corrections** to launch a dialog with available options (Figure 4), it will add corrected p-value column(s) to the right of the selected p-value column(s)

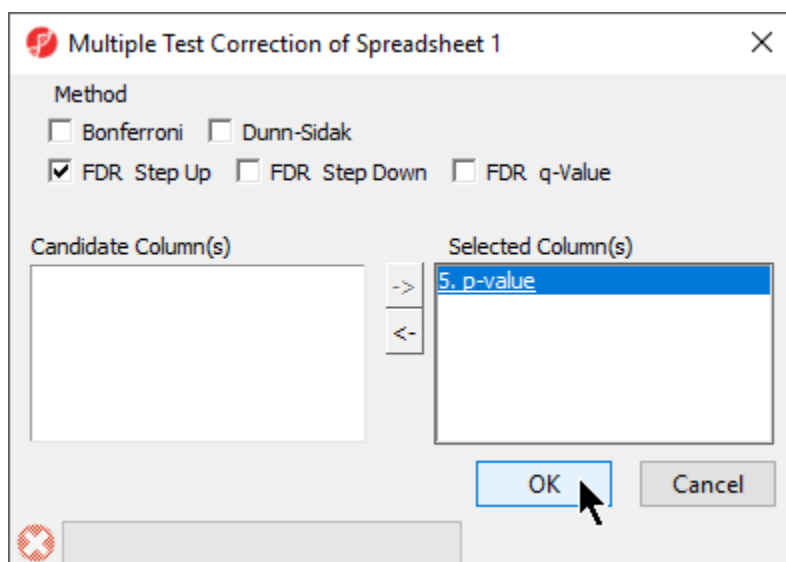


Figure 8. Options available for Multiple Test Corrections

Plotting numeric data associated with a gene list

A variety of profile plots can be used to visualize the numerical data associated with your imported gene list.

- Select **View** from the main toolbar
- Select any applicable option

Genome Browser

If you have imported numerical data associated with genes (like p-values or fold-changes), you can visualize these values in the *Genome Browser* once an annotation file is associated to the spreadsheet, and there is genomic location information in the annotation file.

- Right-click on a row header in the imported gene list spreadsheet
- Select **Browse to location**

If the annotations have been configured properly, you should see a *Regions* track for the first column of numerical data, a cytoband track, and an annotation track. You can also add another track to display a second column of numerical data.

- Select **New Track**
- Select **Add a track from spreadsheet**
- Select **Next >**

A new track titled *Regions* will be added.

- Select **Regions** in the track preferences panel to edit it
- Select the other numerical column in the *Bar height by* drop-down menu

Clustering

For a gene list with expression values on each sample, clustering can be performed. Access the clustering function through the toolbar, not from a workflow. The workflow implementations assume that the data to be clustered are found on a parent spreadsheet and the list of genes is in a child spreadsheet.

- Select **Tools** from the main toolbar
- Select **Discover** then **Hierarchical Clustering**

Hierarchical Clustering assumes that samples are rows and genes are columns so consider transposing your data if this is not the case. If you have only one column or row of data, cluster only on the dimension with multiple categories by deselecting either *Rows* or *Columns* from *What to Cluster* in the *Hierarchical Clustering* dialog.

Additional Assistance

If you need additional assistance, please visit [our support page](#) to submit a help ticket or find phone numbers for regional support.



Your Rating:  Results:  36 rates