

# Importing Affymetrix CEL files

Download the data from the Partek site to your local disk. The zip file contains both data and annotation files.

- Unzip the files to C:\Partek Training Data\Down\_Syndrome-GE or to a directory of your choosing. Be sure to create a directory or folder to hold the contents of the zip file
- Copy or move the annotation files (HG-U133A.cdf, HG-U133A.na36.annot, HG-U133A.na36.annot.idx) to C:\Microarray Libraries.

Copying the annotation files to the default library location is done because newer annotation files that are released after the publication of this tutorial may cause the results to be different than what is shown in the published tutorial. If, however, you prefer to download the latest version, you may omit copying the HG-U133A files to C:\Microarray Libraries.

- Start Partek® Genomics Suite® and select **Gene Expression** from the *Workflows* panel on the right side of the tool bar in the main window (Figure 1)

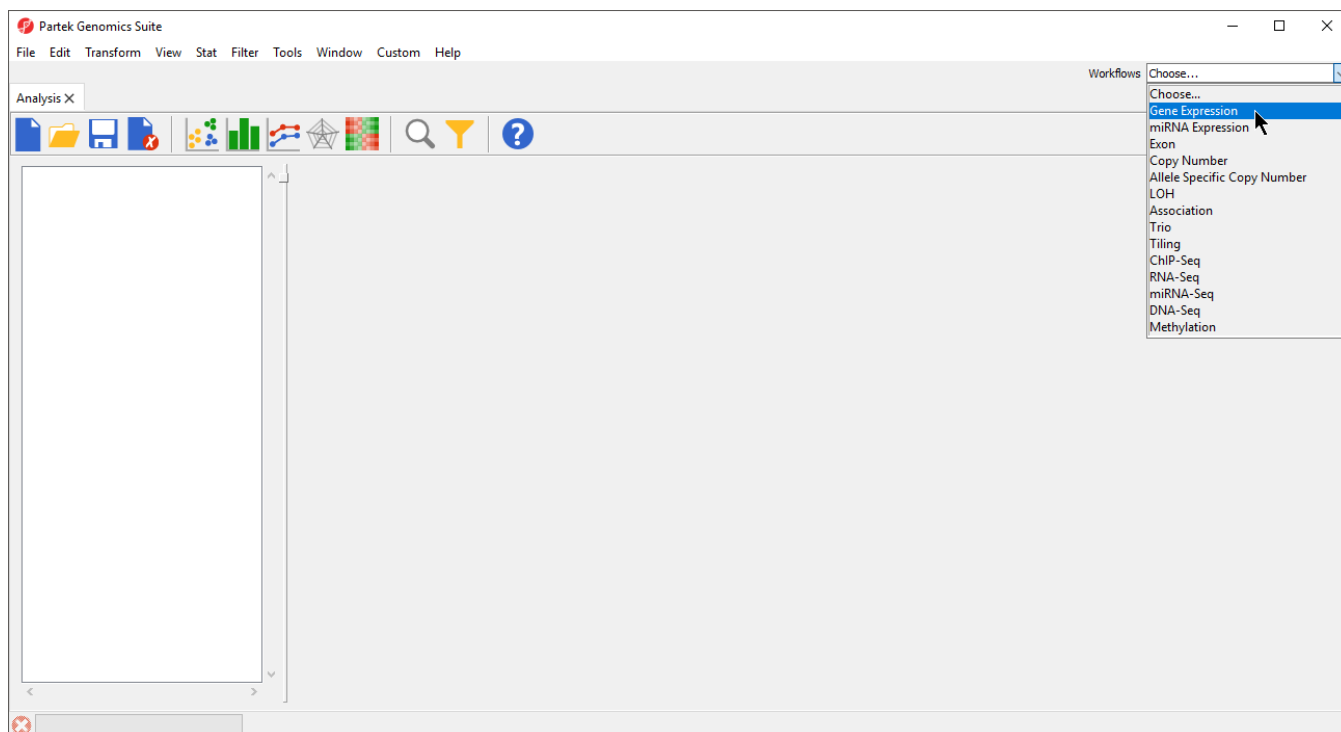


Figure 8. Selecting the gene expression workflow

- Select **Import Samples** under the *Import* section of the workflow
- Select **Import from Affymetrix CEL Files** and then select **OK**
- Select the **Browse** button and select the C:\Partek Training Data\Down\_Syndrome-GE folder. By default, all the files with a .CEL extension are selected (Figure 2)

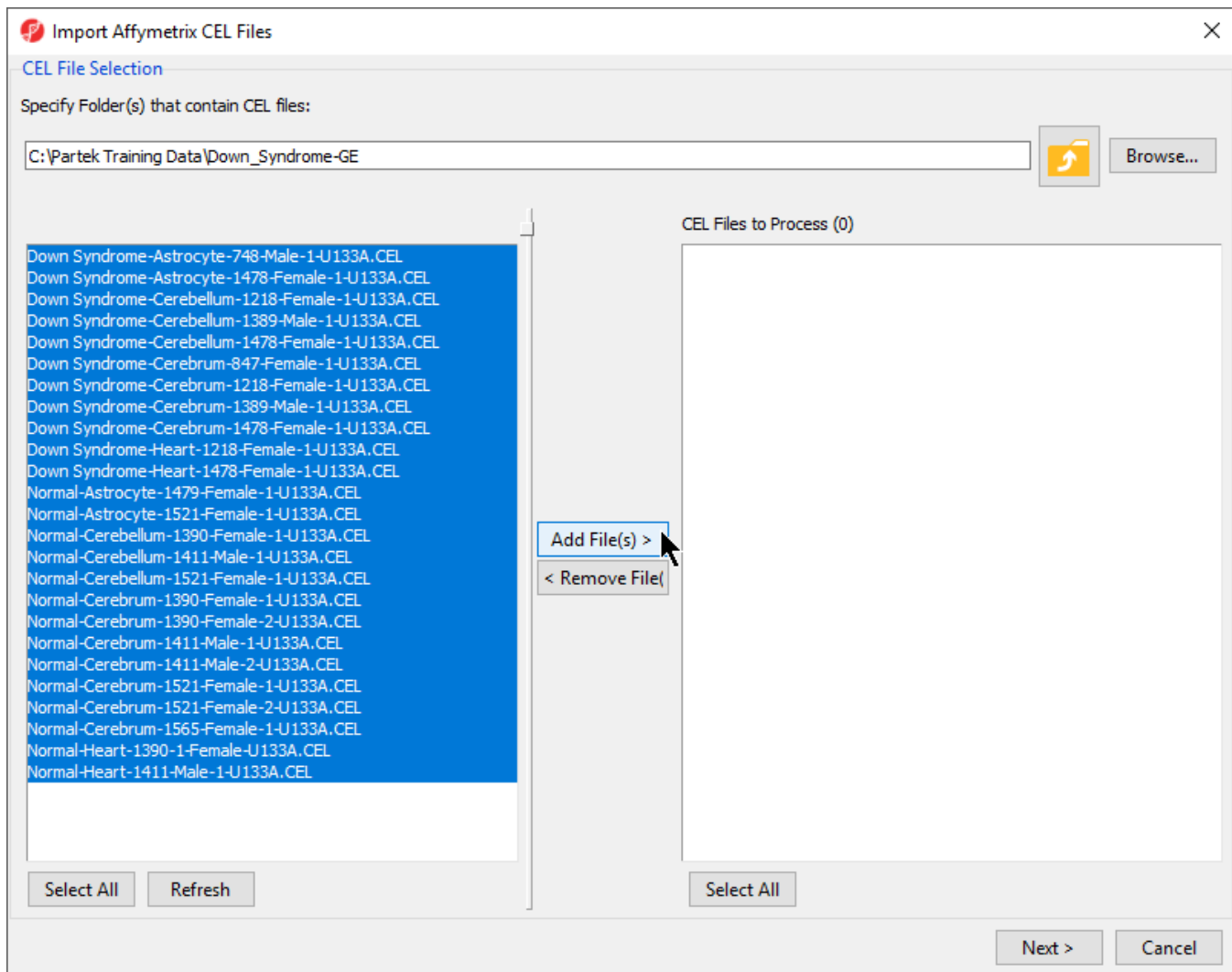


Figure 9. Selecting the folder and CEL files for the experiment

- Select the **Add File(s) >** button to move all the .CEL files to the right panel. Twenty-five CEL files will be processed
- Select the **Next >** button to open the *Import Affymetrix CEL Files* dialog (Figure 3)

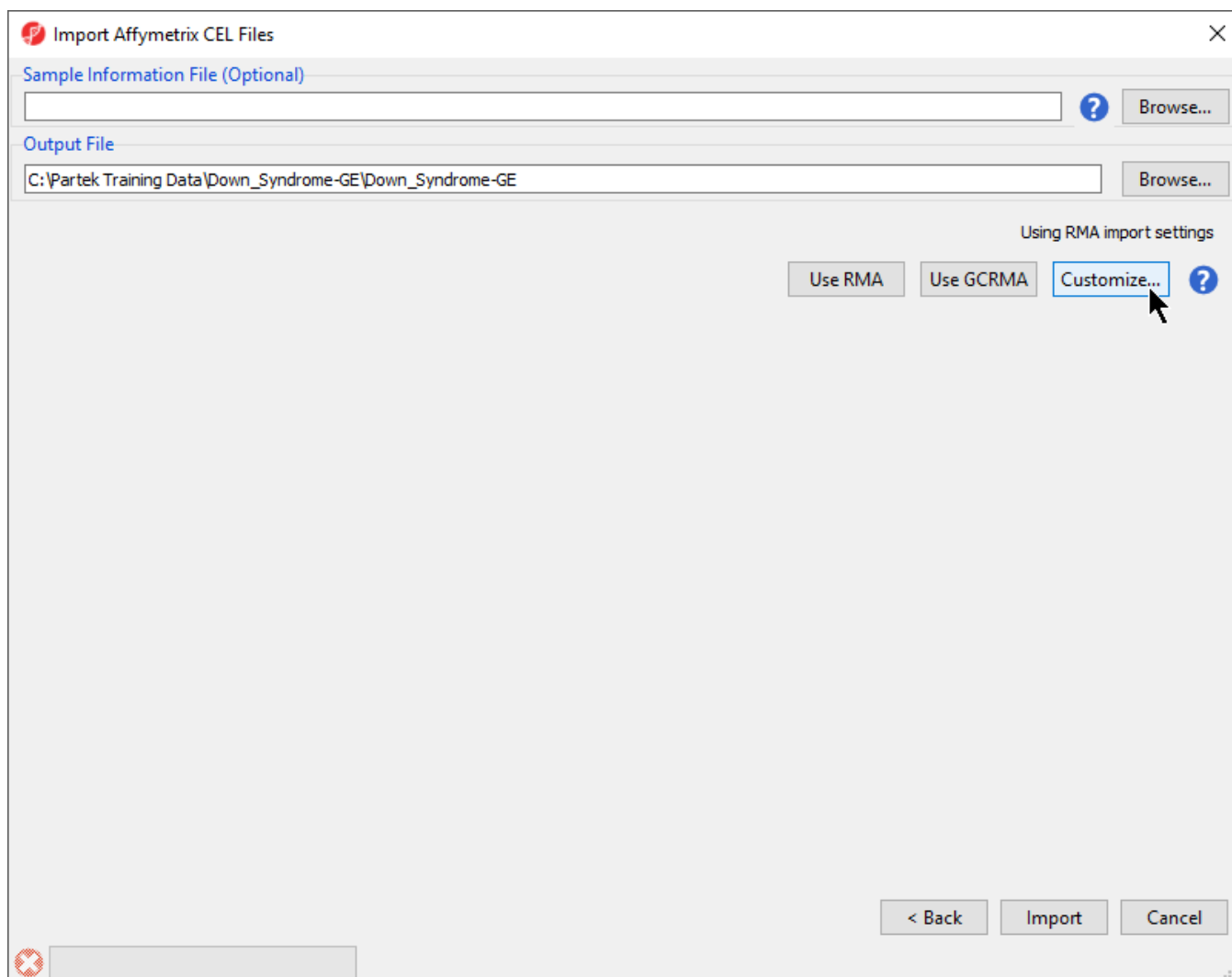


Figure 10. Configuring import files window

- Select **Customize...** to open the *Advanced Import Options* dialog (Figure 4)

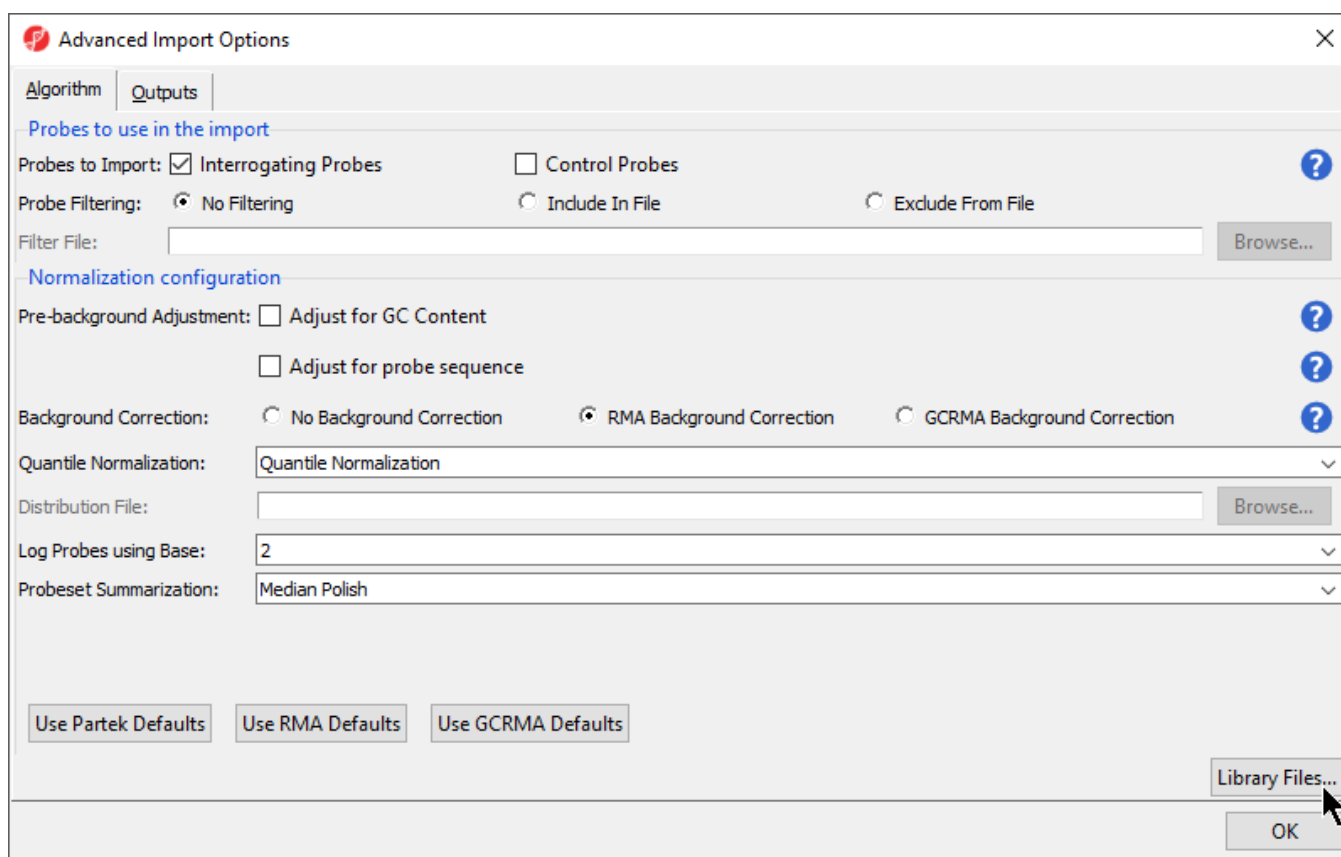


Figure 11. Configuring the Advanced Import Options dialog

- Select **Library Files...** to open the *Specify File Locations* dialog (Figure 5). This dialog is used to specify the location of the library folder and the annotation files

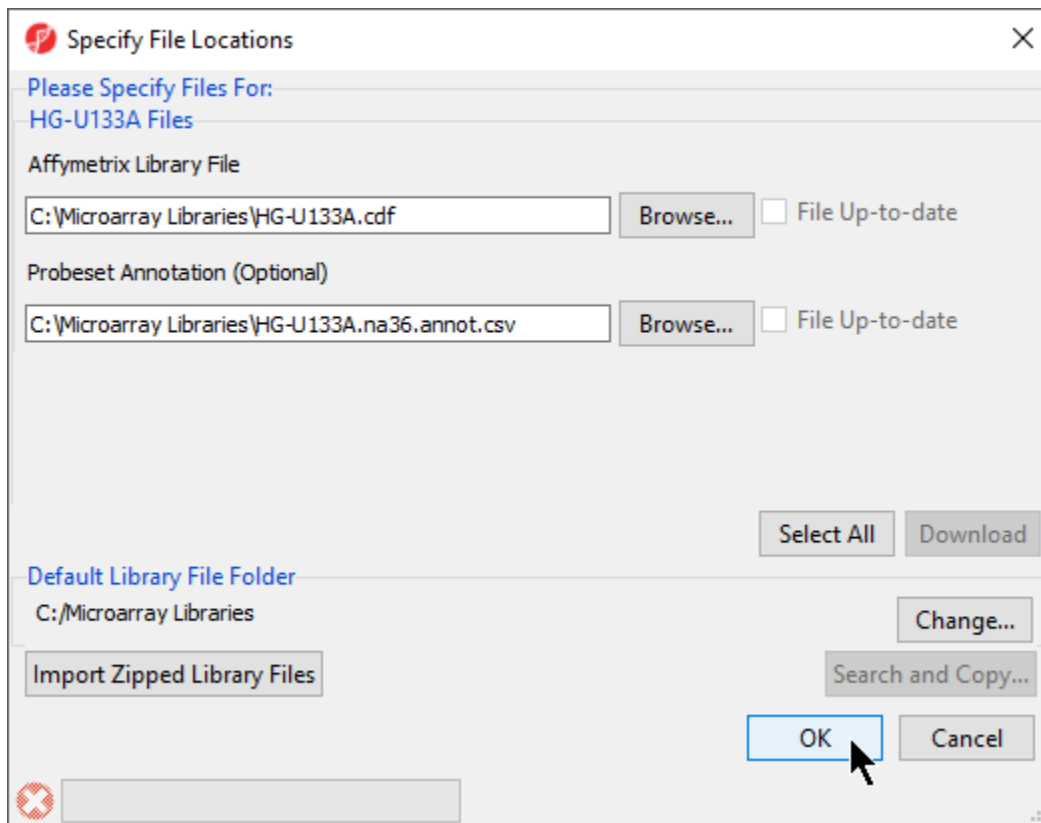


Figure 12. Specifying Microarray Library files or change the default library directory

Partek Genomics Suite will automatically assign the annotation files according to the chip type stored in the .CEL files. If the annotation files are not available in the library directory, Partek Genomics Suite will automatically download and store them in the Default Library File Folder.

- The default library location can be modified by selecting **Change...** in the *Default Library File Folder* panel. By default, the library directory is at C:\Microarray Libraries. This directory is used to store all the external libraries and annotation files needed for analysis and visualization. The library directory can also be modified from *Tools > File Manager* in the main Partek Genomics Suite menu
- Select **OK** (Figure 5) to close the *Specify File Locations* dialog
- Select the **Outputs** tab from the *Advanced Import Options* dialog (Figure 6)

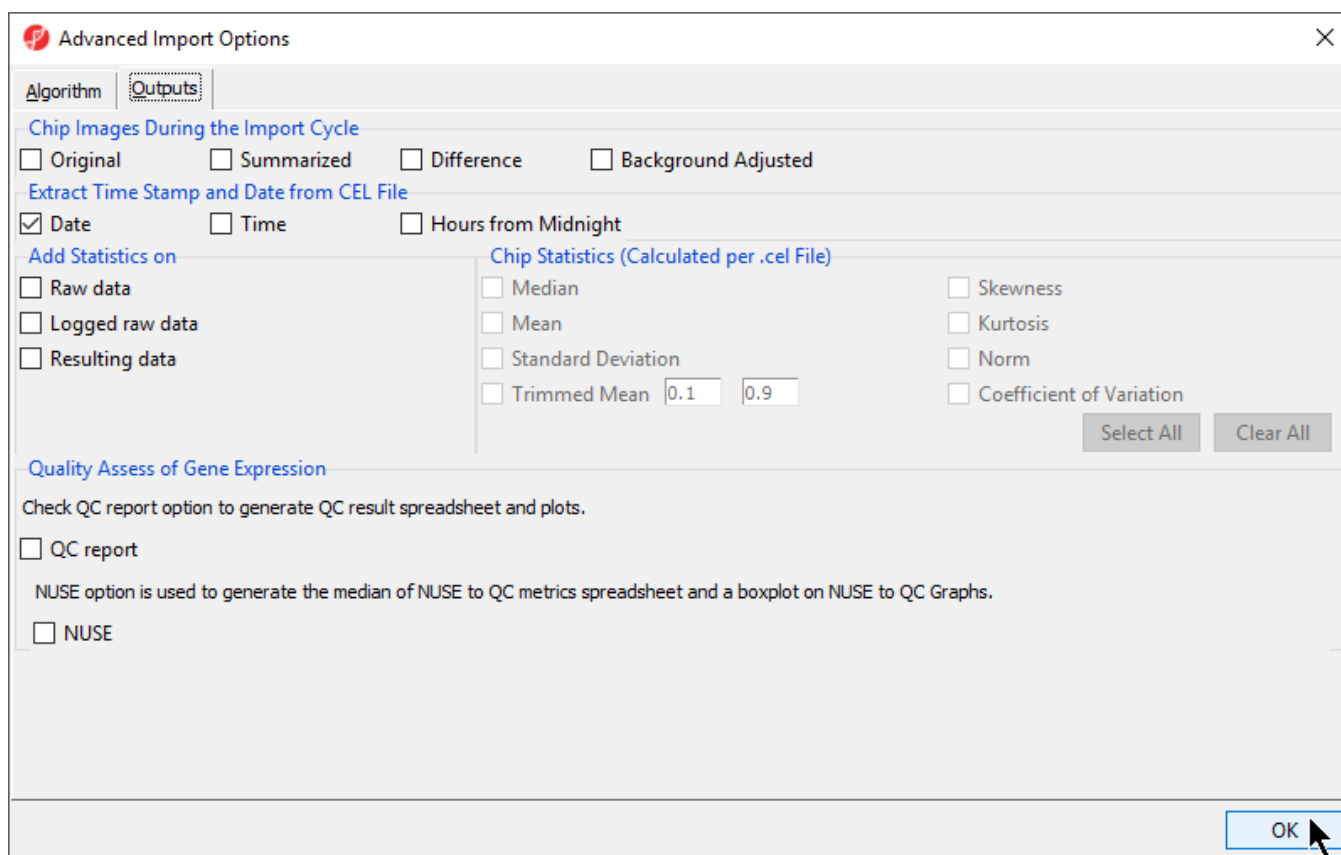


Figure 13. Specifying Advanced Import Options to create chip images of and extract the scan date from the CEL files

- In the *Extract Time Stamp and Date from CEL File* panel, make sure the **Date** button is selected to extract the chip scan date. This information can help you detect if there are batch effects caused by the process time
- In the *Quality Assess of Gene Expression* panel, leave the **QC report** button unselected. A user guide for the microarray data quality assessment and quality control features is available in the User's Manual
- Select **OK** to exit the *Advanced Import Options* dialog
- Select **Import**. The progress bar on the lower left of the *Import Affymetrix CEL files* dialog will update as .CEL files are imported. Once all files have been imported, the *Import Affymetrix CEL Files* dialog will close

After importing the .CEL files has finished, the result file will open in Partek Genomics Suite as a spreadsheet named *1 (Down\_Syndrome-GE)*. The spreadsheet should contain 25 rows representing the microarray chips (samples) and over 22,000 columns representing the probe sets (genes) (Figure 7).

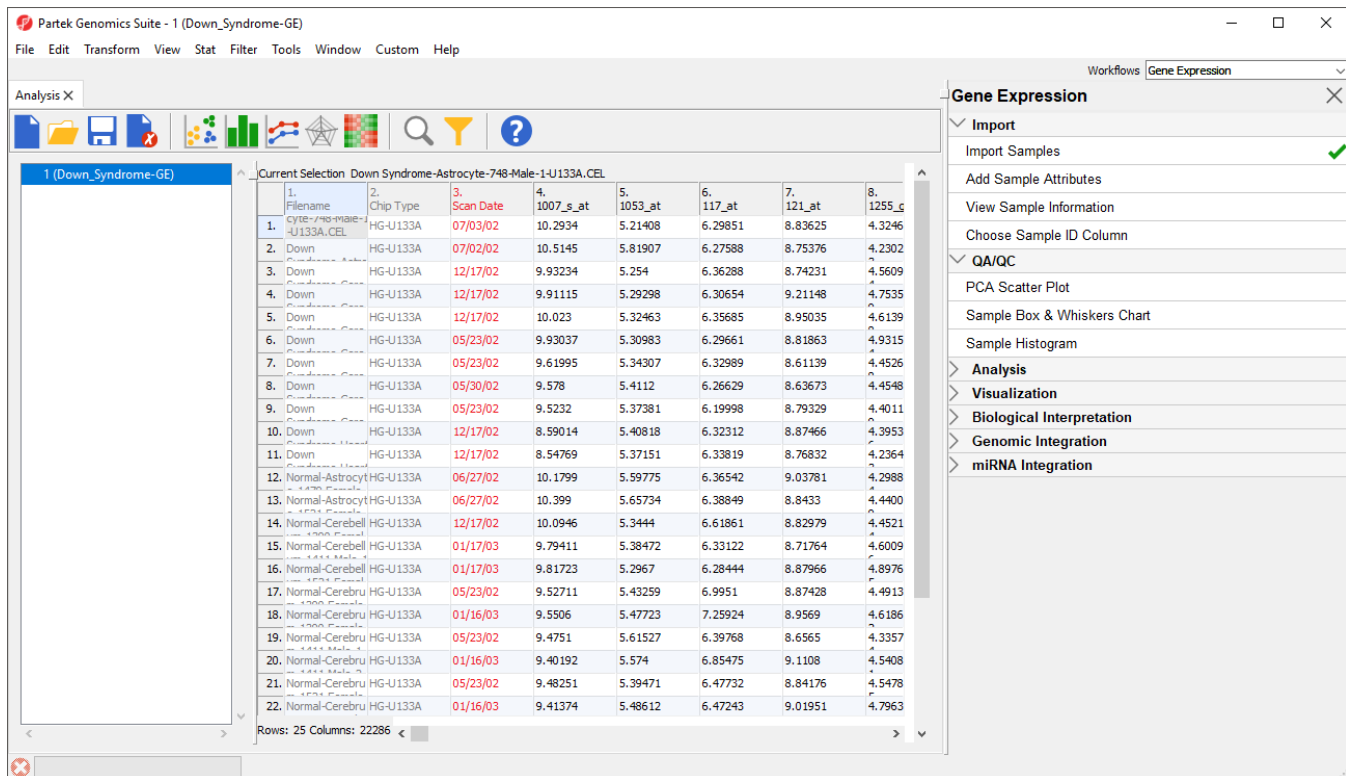


Figure 14. Viewing the main or top-level spreadsheet

For additional information on importing data into Partek Genomics Suite, see **Chapter 4 Importing and Exporting Data** in the Partek User's Manual. The User's Manual is available from the Partek Genomic Suite software main menu *Help > User's Manual*. The [FAQ](#) (*Help > On-line Tutorials > FAQ*) may also be helpful. As this tutorial only addresses some topics, you may need to consult the User's Manual for additional information about other useful features.

It is recommended that you are familiar with **Chapter 6 The Pattern Visualization System** of the User's Manual before going through the next section of the tutorial.

« [Gene Expression Analysis](#) [Adding sample information](#) »

## Additional Assistance

If you need additional assistance, please visit [our support page](#) to submit a help ticket or find phone numbers for regional support.



Your Rating:



Results:



36 rates