

# Detect differentially methylated CpG islands

The approach described in previous sections relies on ANOVA to detect differentially methylated CpG sites and takes individual sites as a starting point for interpretation. Since ANOVA compares M values at each site independently, this strategy is robust to type I/type II probe bias.

An alternative could be to first summarize all the probes belonging to a CpG island region (i.e. island, N-shore, N-shelf, S-shore, S-shelf) and then use ANOVA to compare regions across the groups. Since the summarization will include both type I and type II probes, you may want to split the analysis in two branches and analyze type I and type II probes independently. To do this, we need to annotate each probe as type I or type II.

- Select the **mvalue** spreadsheet
- Select **Transform** from the main toolbar
- Select **Create Transposed Spreadsheet...** from the *Transform* drop-down menu (Figure 1)

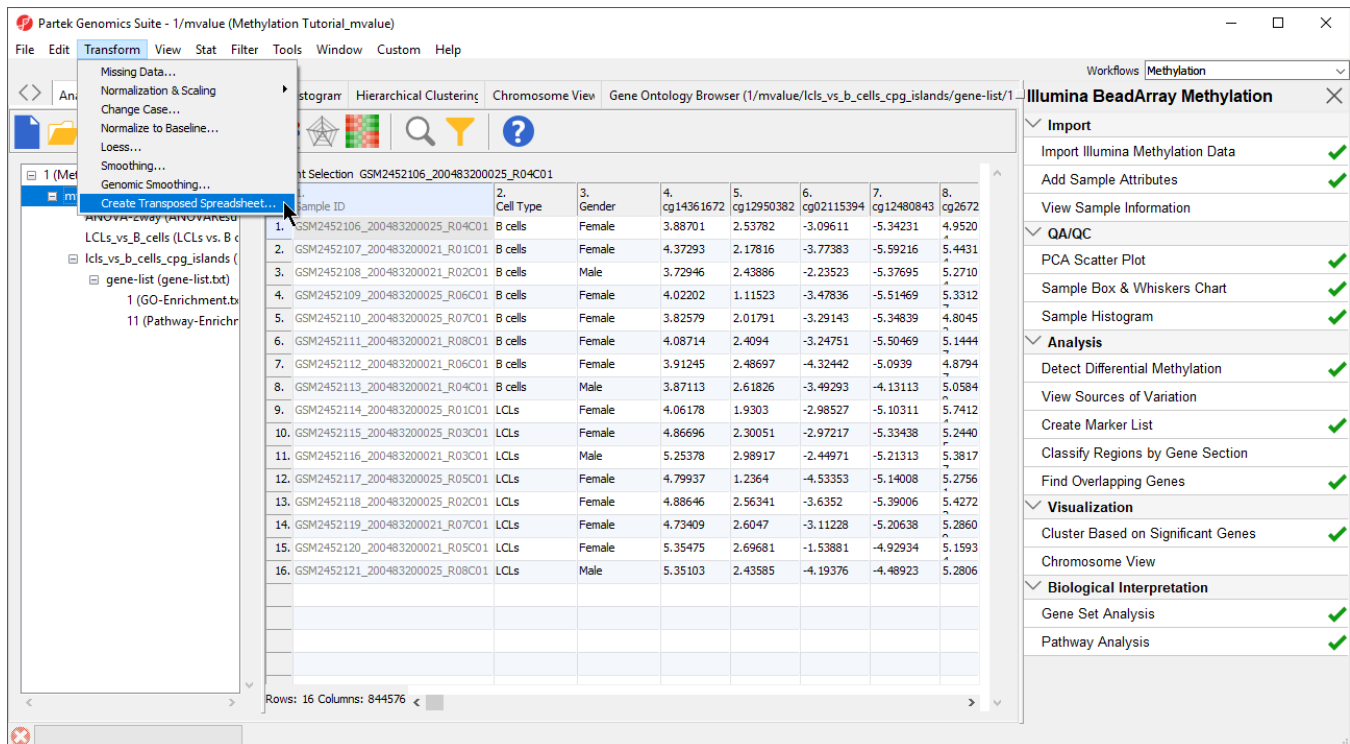


Figure 1. Creating a transposed spreadsheet

- Select **Sample ID** for *Column:* and **numeric** for *Data Type:*
- Select OK

A new temporary spreadsheet will be created with a row for each probe and columns for each sample.

- Right-click on column **1. ID** to bring up the pop-up menu
- Select **Insert Annotation**
- Select **Add as categorical**
- Select **Infinium\_Design\_Type** and **UCSC\_CpG\_Islands\_Name** from the *Column Configuration* options (Figure 2)

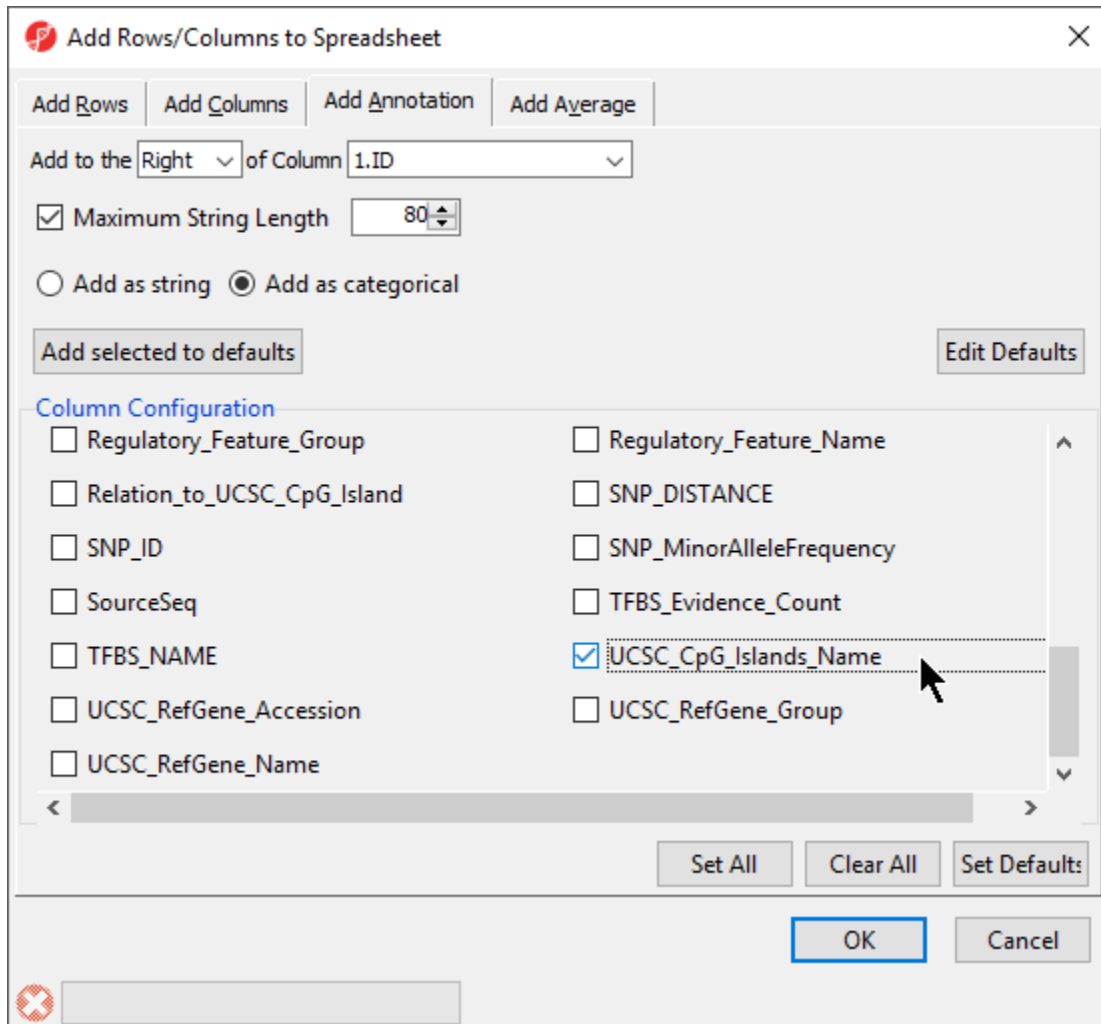



Figure 2. Adding Infinium design type and CpG island annotations

- Select **OK** to add the Infinium design type and UCSC CpG island name as categorical columns on the spreadsheet

Now, we can use the interactive filter to create separate spreadsheets for type I and type II probes.

- Select (  ) to launch the interactive filter
- Select **2. Infinium\_Design\_Type** from the drop-down menu if not selected by default
- Left-click the **type I** column to exclude it
- Right-click the temporary spreadsheet in the spreadsheet tree to bring up the pop-up dialog
- Select **Clone...** (Figure 3)

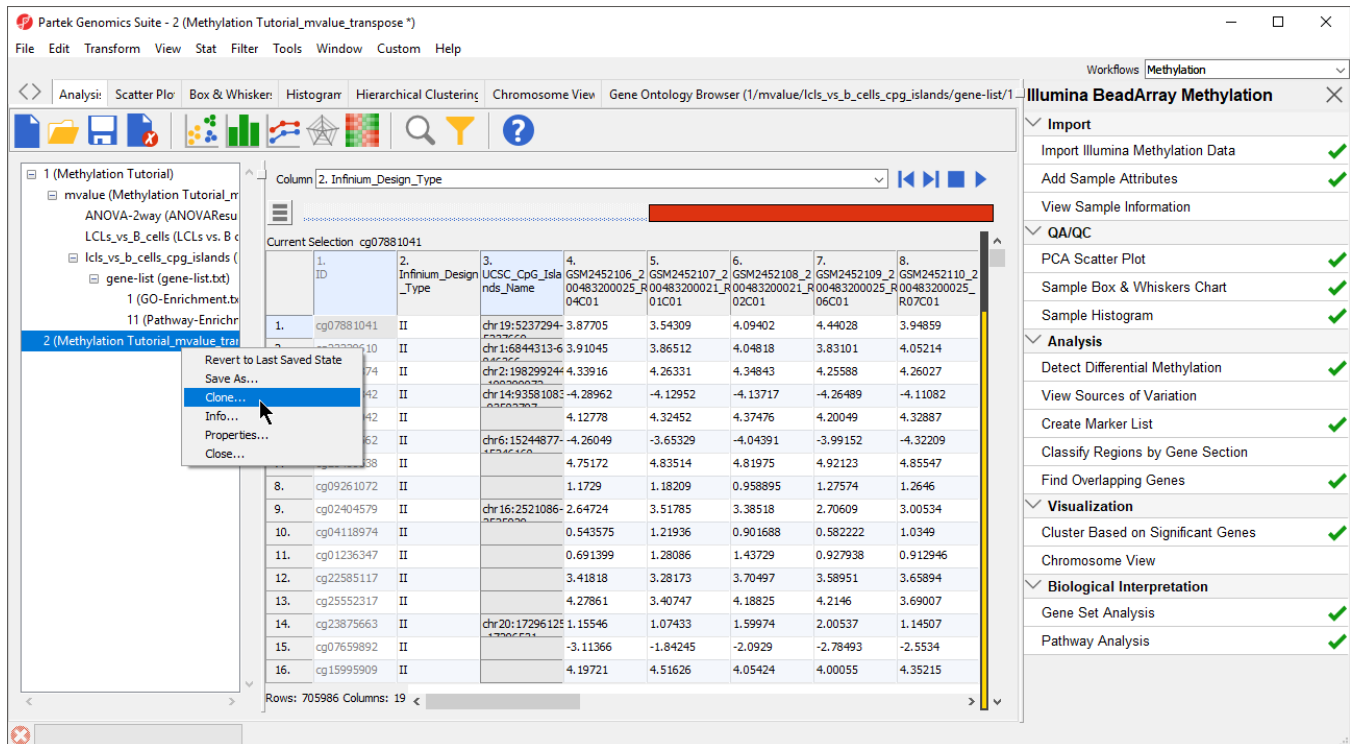



Figure 3. Creating a probe list with only Infinium type II probes

- Name the new spreadsheet **female\_only\_typed\_probes**
- Select **OK**
- Save the created spreadsheet, we chose the file name *female\_only\_typed\_probes*
- Repeat process to create a spreadsheet for type I probes

The temporary spreadsheet is no longer needed so we can close it.

- Close the temporary spreadsheet by selecting it in the file tree and selecting (  )

We can use these spreadsheets to generate lists of M values at CpG island regions

- Select spreadsheet **female\_only\_typed\_probes**
- Select **Stat** from the main toolbar
- Select **Column Statistics...** under *Descriptive* (Figure 4)

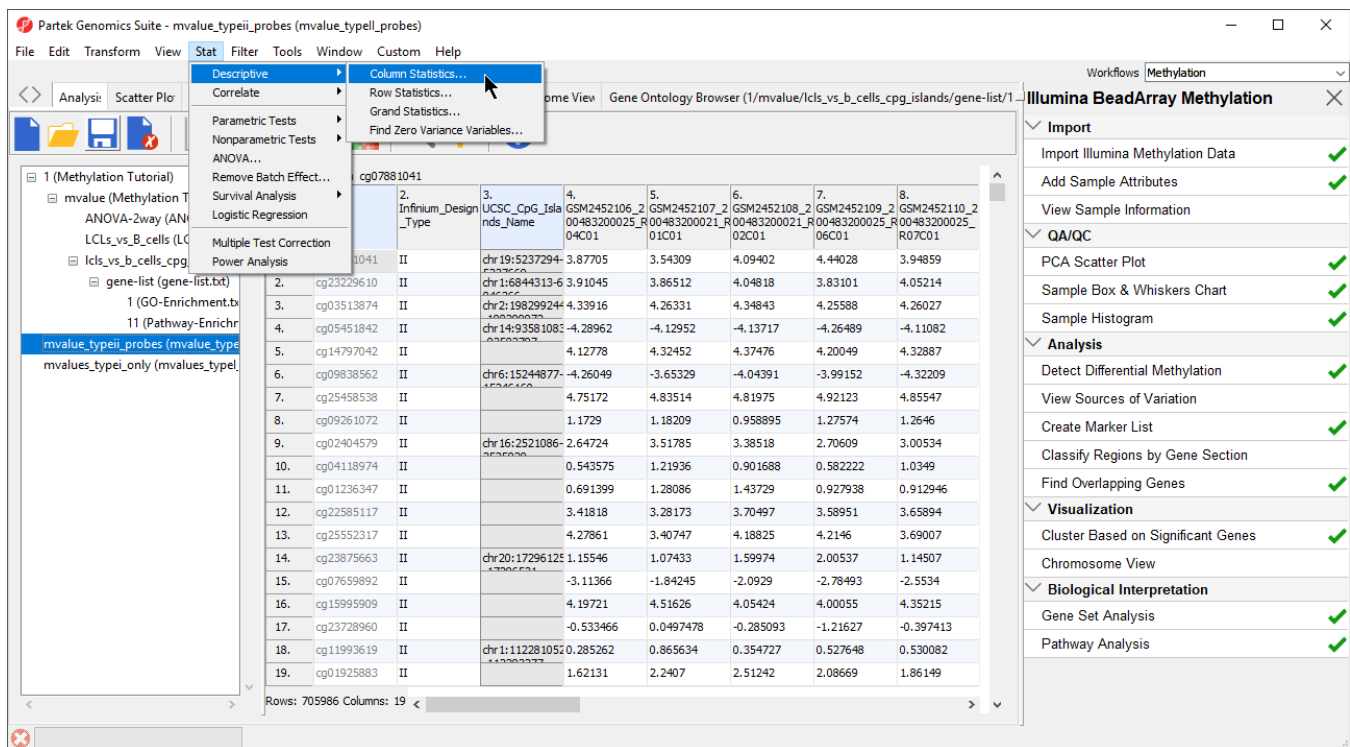


Figure 4. Selecting column statistics

- Add **Mean** to the *Selected Measure(s)* panel
- Select **Group By** and set it to **3. UCSC\_CpG\_Islands\_Name** (Figure 5)

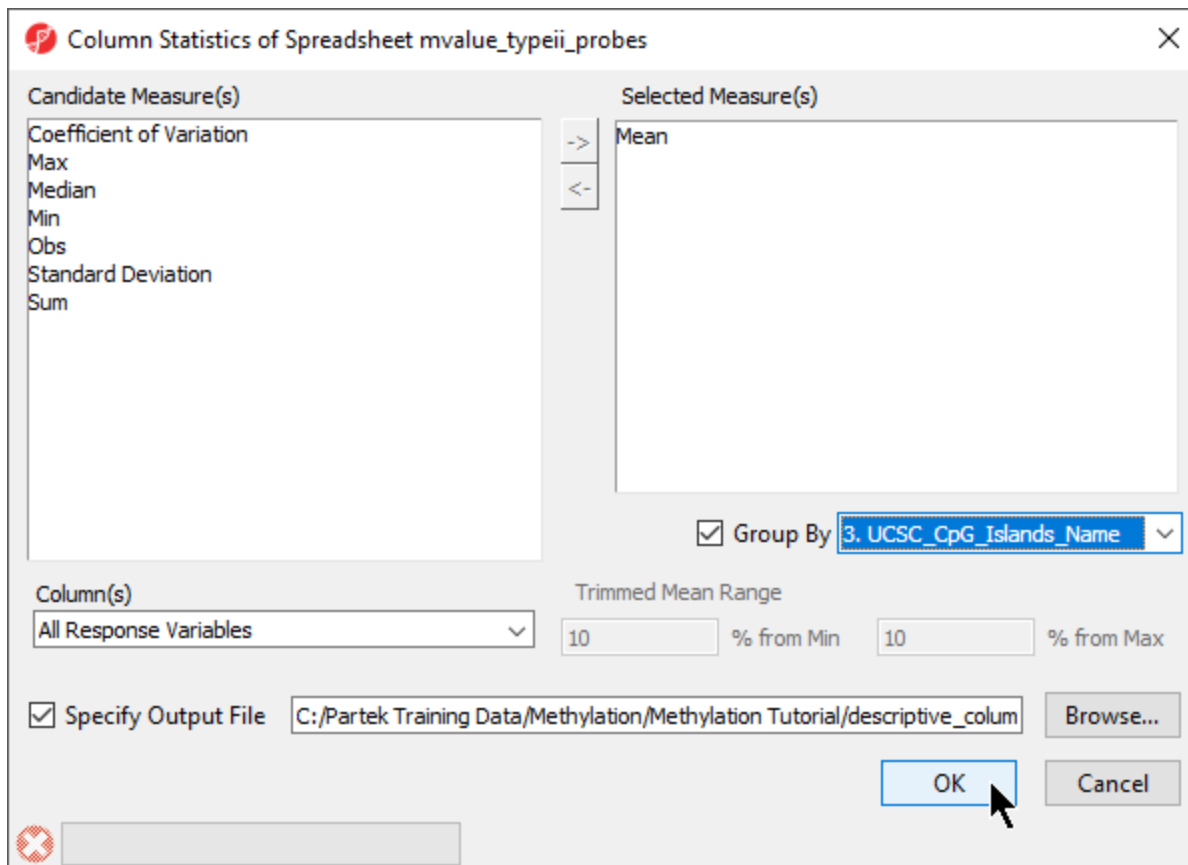


Figure 5. Configuring column statistics

- Select **OK**

The new temporary spreadsheet has one CpG island region per row (Figure 6), samples on columns, and the values in the cells represent the mean of M values of all the CpG probes in the region.

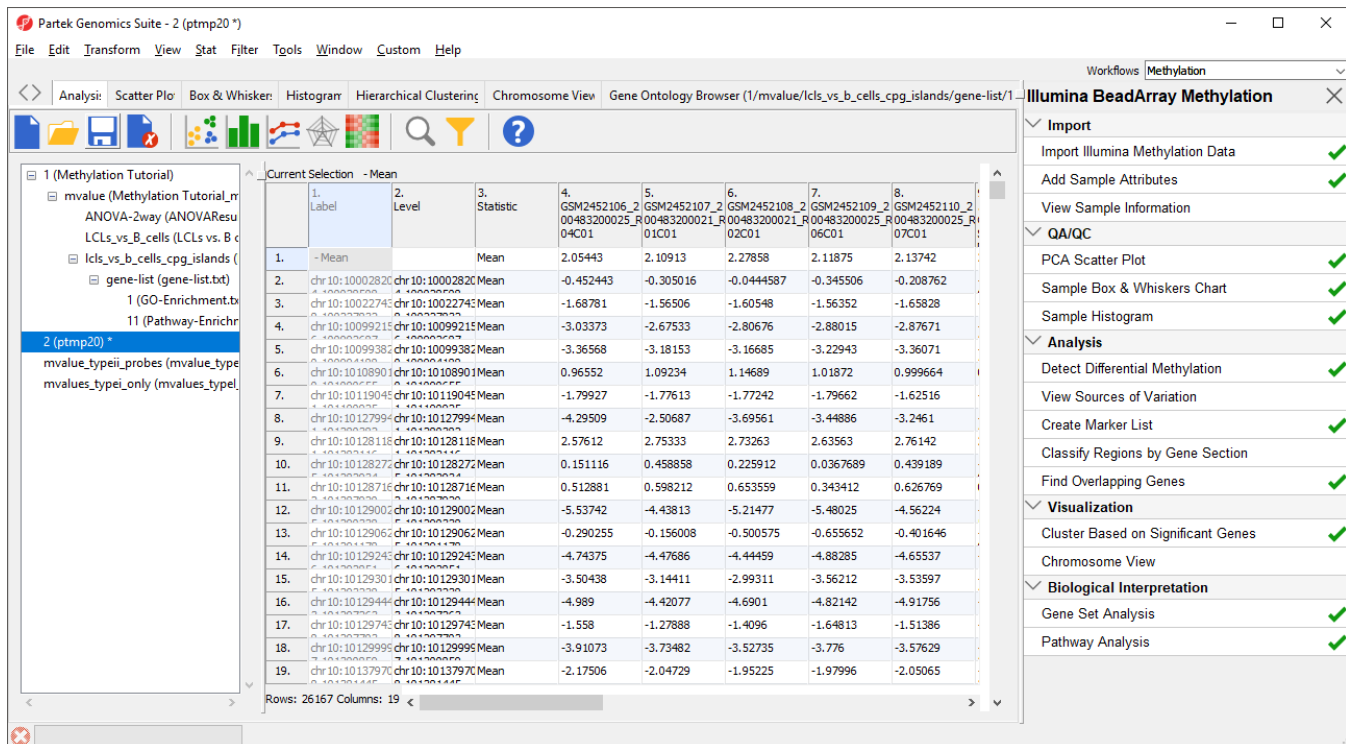


Figure 6. New spreadsheet with average M values for probes at each CpG island; probes not at CpG islands are collected into the first row "- Mean"

Note the first row, with label "- Mean". It corresponds to all the probes that map outside of UCSC CpG islands. As it is not needed for the downstream analysis, we will remove it.

- Right-click on the row header for *Mean*
- Select **Delete** to remove the row

The final step is to transpose the data back to its original orientation.

- Select **Transform** from the main toolbar
- Select **Create Transposed Spreadsheet...** from the *Transform* drop-down menu
- Select **2. Level** for *Column:* and **numeric** for *Data Type:*
- Select **OK**

The layout of the new transposed spreadsheet is as follows: one sample per row with CpG island regions on columns; cell entries correspond to mean methylation status of the region (Figure 7). The column with a blank value for the column header is the average of all probes not associated with CpG island regions. You can delete this column if you like.

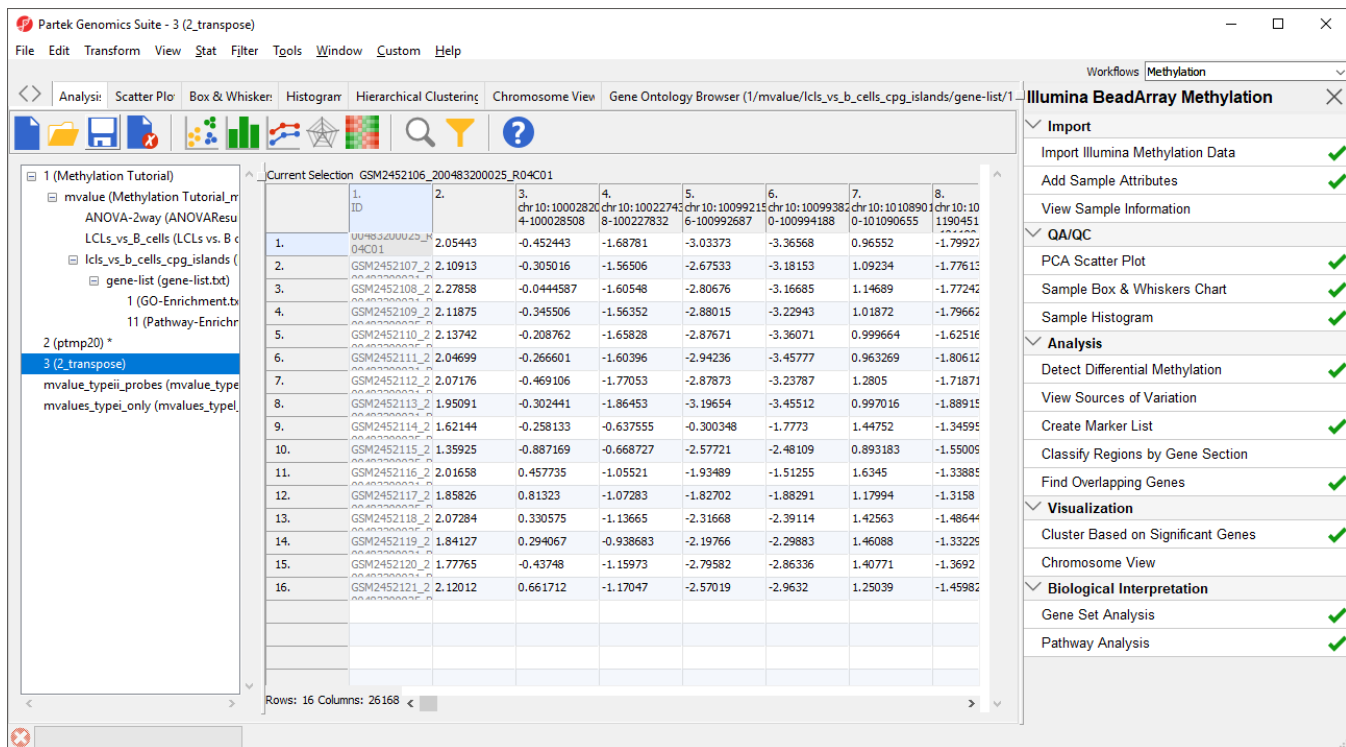



Figure 7. Spreadsheet with average M values of probes in each CpG island for each sample

- Right-click the transposed spreadsheet, *2\_transpose*
- Select **Save as...** from the pop-up menu
- Name it **mvalues\_typeII\_probes\_CpG\_islands**
- Close the source temporary spreadsheet by selecting it in the spreadsheet tree and selecting (  )

The *mvalues\_typeII\_probes\_CpG\_islands* spreadsheet can be used as a starting point for ANOVA and other analyses. You can also repeat the steps above to create an equivalent spreadsheet for type I probes.

« Perform gene set and pathway analysis Optional: Add UCSC CpG island annotations »

## Additional Assistance

If you need additional assistance, please visit [our support page](#) to submit a help ticket or find phone numbers for regional support.



Your Rating:



Results:



34 rates